

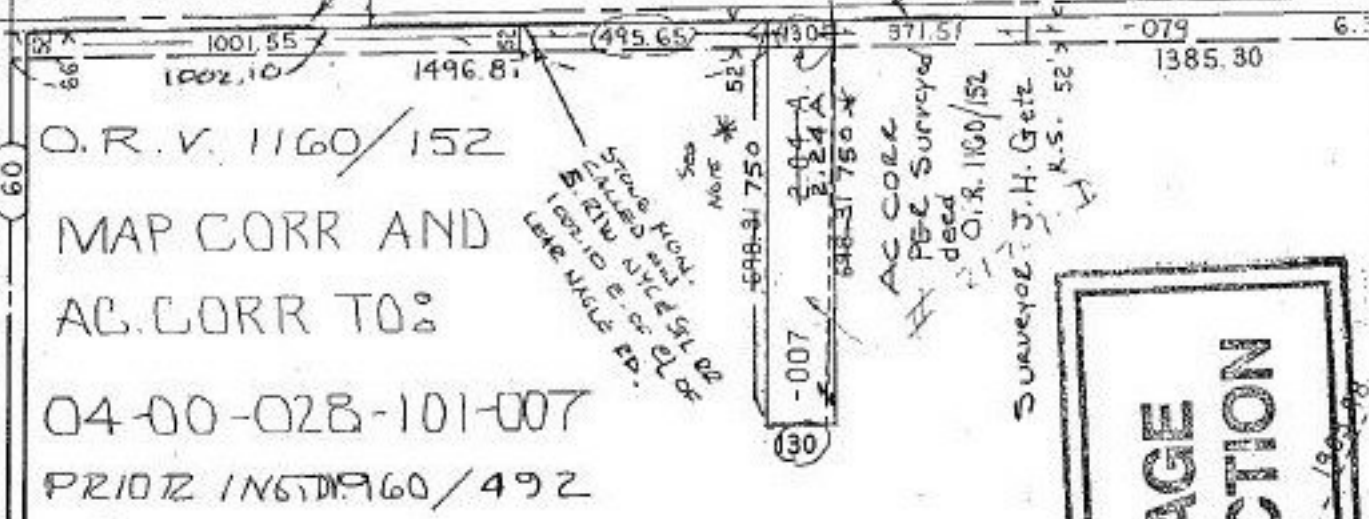
#21707-D

ARROWS POINT TO S'LY LINE OF
N.Y.C. & ST. L. RR RW

N. Y. C. & ST. L.

RD.

LEAR NAGLE RD.



D.R.V. 1160/152
 MAP CORR AND
 AC CORR TO
 04-00-028-101-007
 PRT 1 IN 65 D 1960/492

PT. -082
 PT. 209.78 A.

* NOTE 750' GOES FROM S. LINE
 NYC & ST L RRW TO S. LINE
 OF -007 & PASSES THRU
 -079 OWNED BY C.E.I.

DO NOT TAKE 698.31' GOES ALONG W. LINE
 OFF MAP -007 FROM THE S. LINE OF
 -079 TO THE S.W. CORNER
 -007 2.21 Ac.

**ACREAGE
 CORRECTION**

**DEED
 CHECK**

21707-D	
APPROVED LORAIN CO. MAP DEPT	
DATE	3-21-96
PAGE	4-H
BY	CAROLYN FRANCIS
21707-D	