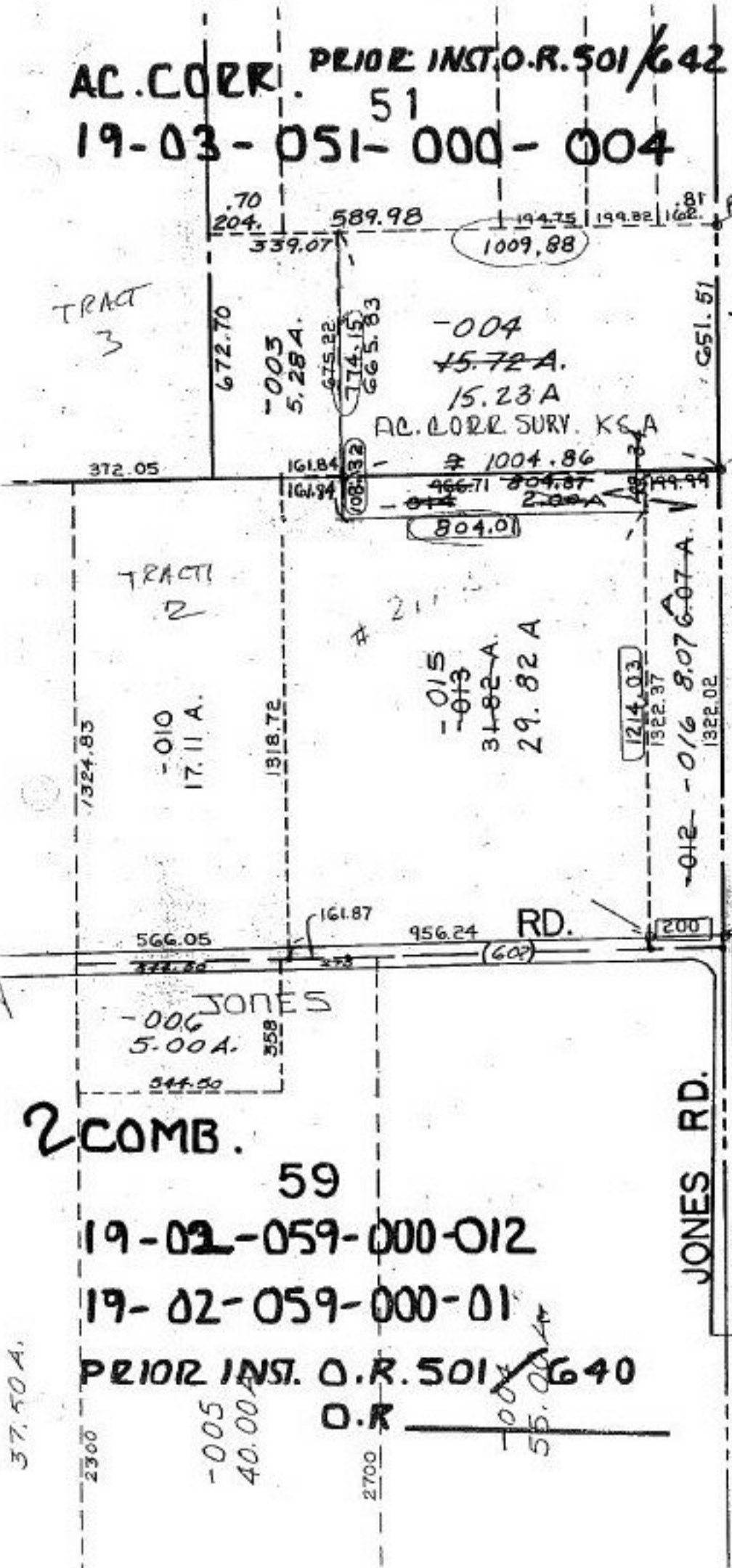


AC. CORR. PRIOR INST. O.R. 501/642  
51  
19-03-051-000-004

#21705

ACREAGE  
CORRECTION

COMBINATION



P.P. NO. 19-03-051-000  
 19-02-059-000  
 PRIOR INST.: O.R. 501/640  
 CLOSURE: 23.30 ac.  
 COMBINED LEGAL 0.01:10,000  
 SURVEYED BY: KSA  
 DAVID L. ELWELL R.S.

21705

APPROVED  
 LORAIN CO.  
 MAP DEPT

DATE 3-19-96

PAGE 19-4

BY CAROLYN FRANCIS

#21705

2 COMB. 59  
 19-02-059-000-012  
 19-02-059-000-01  
 PRIOR INST. O.R. 501/640  
 O.R. 55.00 A