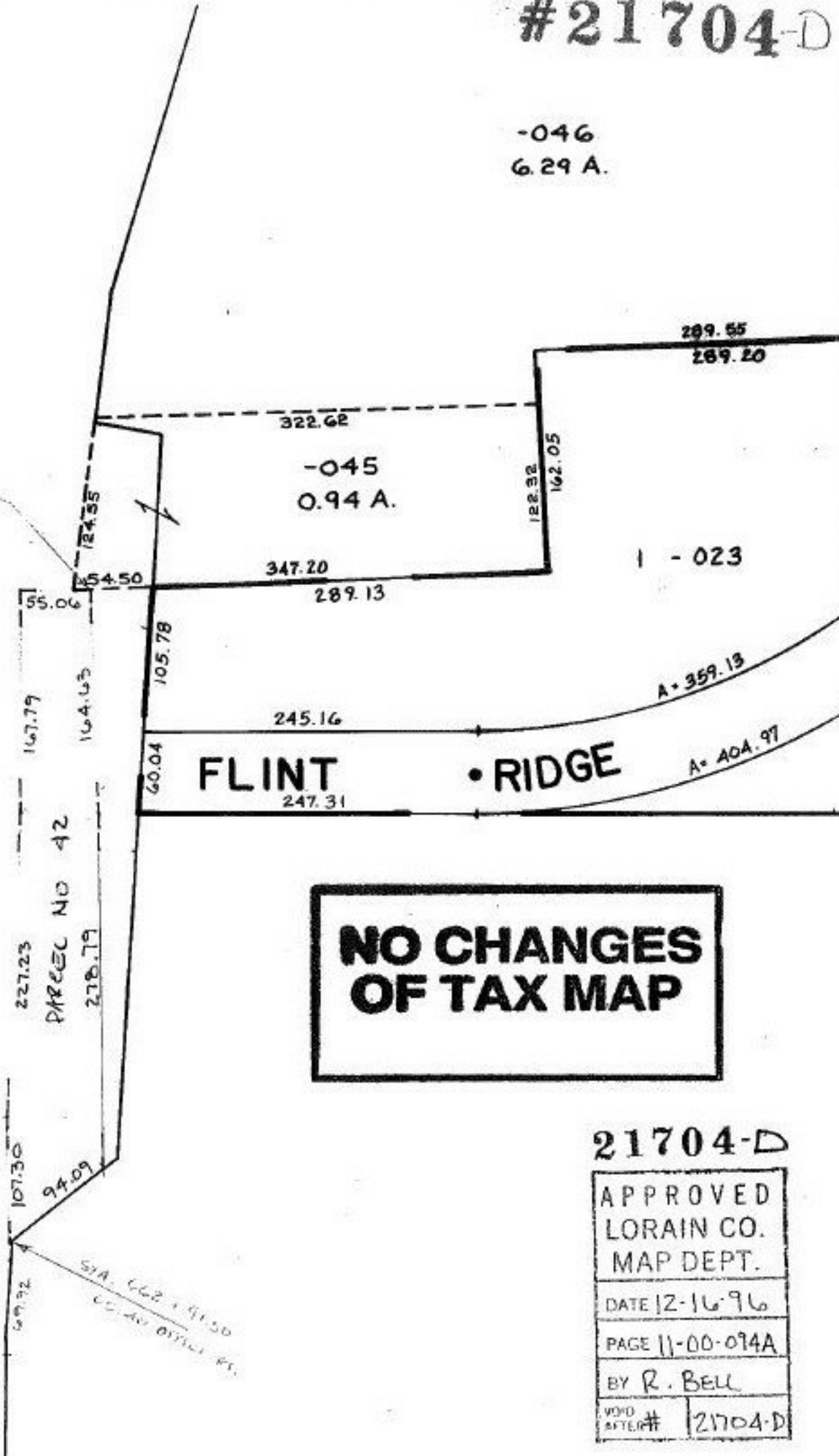


#21704-D

-046  
6.29 A.

SEE 10-00-006-H

STA. 668+45  
126.50 CORNER



**NO CHANGES  
OF TAX MAP**

21704-D

APPROVED
LORAIN CO.
MAP DEPT.
DATE 12-16-96
PAGE 11-00-074A
BY R. BELL
VOID AFTER # 21704-D

STA. 662+91.50  
66.40 DISTANCE