

#21696

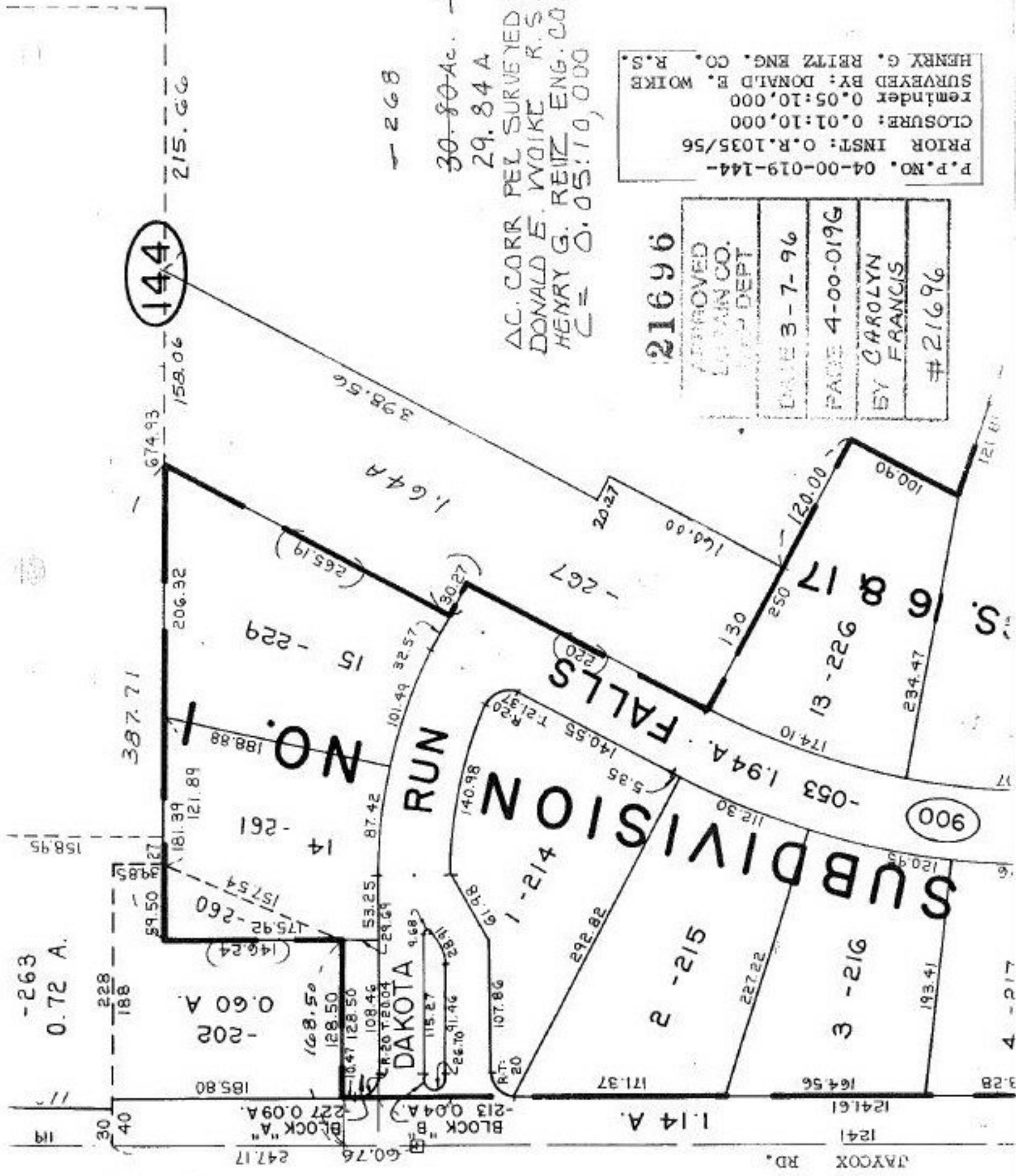
P.P. NO. 04-00-019-144-
PRIOR INST: O.R. 1035/56
CLOSURE: 0.01:10,000
REINDER 0.05:10,000
SURVEYED BY: DONALD E. WOIKE
HENRY G. REITZ ENG. CO. R.S.

APPROVED
LUTHERAN CO.
CIVIL DEPT
DATE 3-7-96
PAGE 4-00-019G
BY CAROLYN
FRANCIS
#21696

AC. CORR. PCL. SURVEYED BY
DONALD E. WOIKE R.S.
HENRY G. REITZ ENG. CO.
C = 0.05:10,000

268
30.80 Ac. 32.44
29.84 A

144



-263
0.72 A.

228
188

168.50
128.50
-202
0.60 A.

DAKOTA

RUN

SUBDIVISION

FALLS

2 -215

3 -216

6
17
13 -226

900

387.71

674.93

158.06

215.66

185.80

227 0.09 A.

60.76

247.17

Block "A"

Block "B"

213 0.04 A.

171.37

1.14 A.

1241

1241.61

164.56

JAYCOX RD.

227.22

193.41

112.30

140.55

5.85

140.98

107.86

59.50

181.39

121.89

175.92

157.54

146.24

175.92

157.54

146.24

175.92

157.54

146.24

175.92

157.54

146.24

175.92

157.54

146.24

175.92

157.54

146.24

175.92

157.54

206.32

265.19

101.49

32.57

87.42

53.25

29.69

108.46

115.27

112.81

226.70

91.46

292.82

61.98

140.98

140.55

1.94 A.

174.10

120.00

100.90

121.81

234.47

121.81

398.56

1.64 A

2027

160.00

130

250

120.00

2027

121.81

100.90

234.47

121.81

121.81

121.81

121.81

121.81

121.81

121.81

121.81

121.81

121.81

121.81

121.81

206.32

265.19

101.49

32.57

87.42

53.25

29.69

108.46

115.27

112.81

226.70

91.46

292.82

61.98

140.98

140.55

1.94 A.

174.10

120.00

100.90

121.81

234.47

121.81

674.93

158.06

215.66

206.32

265.19

101.49

32.57

87.42

53.25

29.69

108.46

115.27

112.81

226.70

91.46

292.82

61.98

140.98

140.55

1.94 A.

174.10

120.00

100.90

387.71

206.32

265.19

101.49

32.57

87.42

53.25

29.69

108.46

115.27

112.81

226.70

91.46

292.82

61.98

140.98

140.55

1.94 A.

174.10

120.00

100.90

121.81

234.47

674.93

158.06

215.66

206.32

265.19

101.49

32.57

87.42

53.25

29.69

108.46

115.27

112.81

226.70

91.46

292.82

61.98

140.98

140.55

1.94 A.

174.10

120.00

100.90

387.71

206.32

265.19

101.49

32.57

87.42

53.25

29.69

108.46

115.27

112.81

226.70

91.46

292.82

61.98

140.98

140.55

1.94 A.

174.10

120.00

100.90

121.81

234.47

674.93

158.06

215.66

206.32

265.19

101.49

32.57

87.42

53.25

29.69

108.46

115.27

112.81

226.70

91.46

292.82

61.98

140.98

140.55

1.94 A.

174.10

120.00

100.90

387.71

206.32

265.19

101.49

32.57

87.42

53.25

29.69

108.46

115.27

112.81

226.70

91.46

292.82

61.98

140.98

140.55

1.94 A.

174.10

120.00

100.90

121.81

234.47

674.93

158.06

215.66

206.32

265.19

101.49

32.57

87.42

53.25

29.69

108.46

115.27

112.81

226.70

91.46

292.82

61.98

140.98

140.55

1.94 A.

174.10

120.00

100.90

387.71

206.32

</