

101

-032
-013

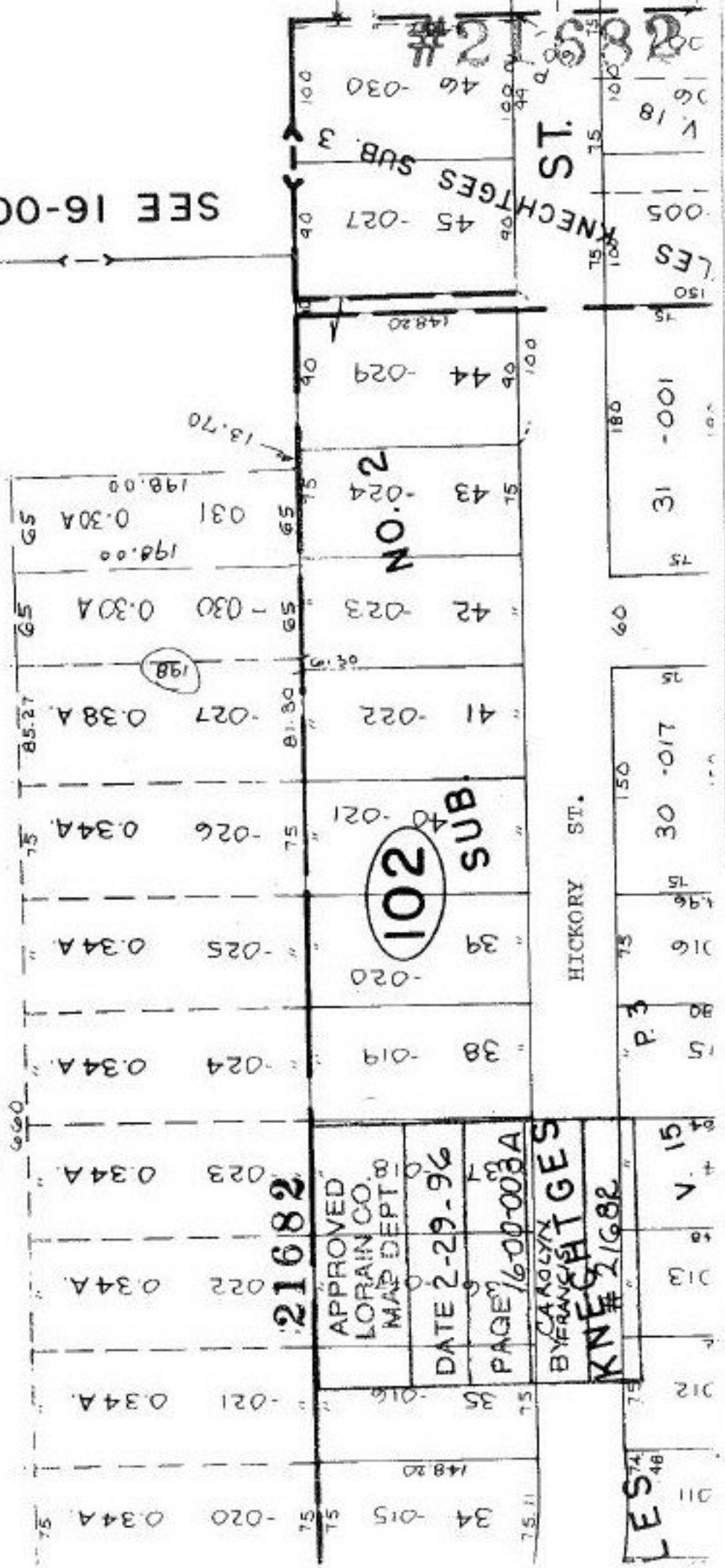
9-10-A

9.10 A

P.P. NO. 16-00-003-101-
PRIOR INST. PV. 454 5.207
CLOSURE: 1, 2 1: INF.
SURVEYED BY: ANDREW E.
RUDY R.S. MARCH 1995

North

SEE 16-00-003-B



21682

APPROVED
LORAIN CO.
MAP DEPT.

DATE 2-29-96

PAGE 16-00-003A

BY CAROLYN
BRANSHAW
KNECHTGES
21682

LES 74 46

V. 15

D. 13

P. 3

1.96

30 -017

31 -001

LES 150

005

V. 18

06 18

02 18

HICKORY ST.

KNECHTGES ST.

SUB. 3

45 -027

46 -030

44 -029

43 -024

42 -023

41 -022

40 -021

39 -020

38 -019

35 -016

34 -015

35 -021

34 -020

0.30A

0.30A

0.30A

0.38A

0.34A

0.34A

0.34A

0.34A

0.34A

0.34A

0.34A

13.70

198.00

198.00

198.00

198.00

198.00

198.00

198.00

198.00

198.00

198.00

198.00

198.00

198.00

198.00

198.00

198.00

198.00

14820

14820

14820

14820

14820

14820

14820

14820

14820

14820

14820

14820

14820

14820

14820

14820

14820

14820

14820

14820

14820

14820

14820

14820

14820

14820

#2 582