

#21681-1065

12-00-063-11

COMB 2

PRITA TO LOWELL GUNZNIC  
DY. O.R. 698 / 81 4-3-93  
CREATED 12-00-063-102-055  
P.F. NO TYPED WRONG.

1507.02

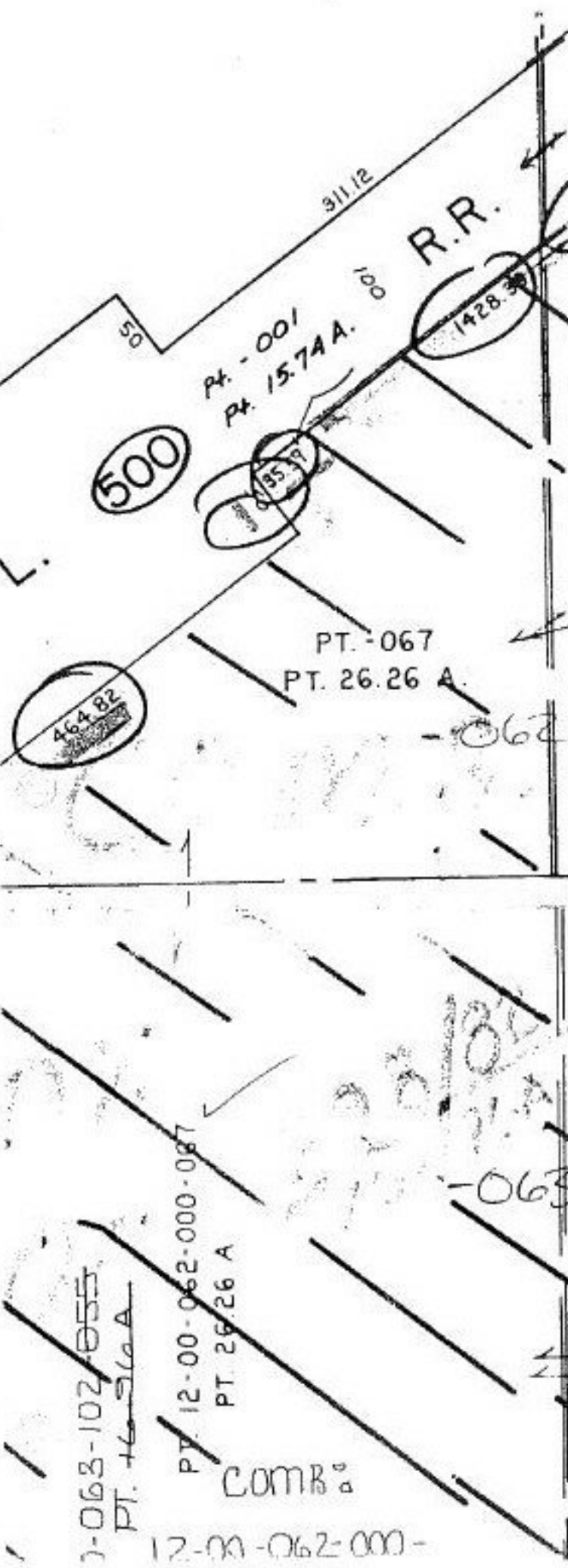
DY.  
O.R. 1166/110

PR. O.R. 11  
PELORE

NO MAP  
CHANGES.  
DO NOT  
DEED FOR THIS  
CHECK!

#21681-11

APPROVED	
LORAIN CO.	
MAP DEPT.	
DATE	2/21/96
PAGE	12-00-062-067
BY	T. Maglain (CEF)
VOID AFTER	2/28/96



PT. 12-00-062-000-087  
PT. 26.26 A

COMB 2

-063-A+B

12-00-063-082-

COMB 2

PT. 12-00-062-000-067  
PT. 26.26 A

12-00-102-055  
PT. 46.51 A

12-00-062-000-