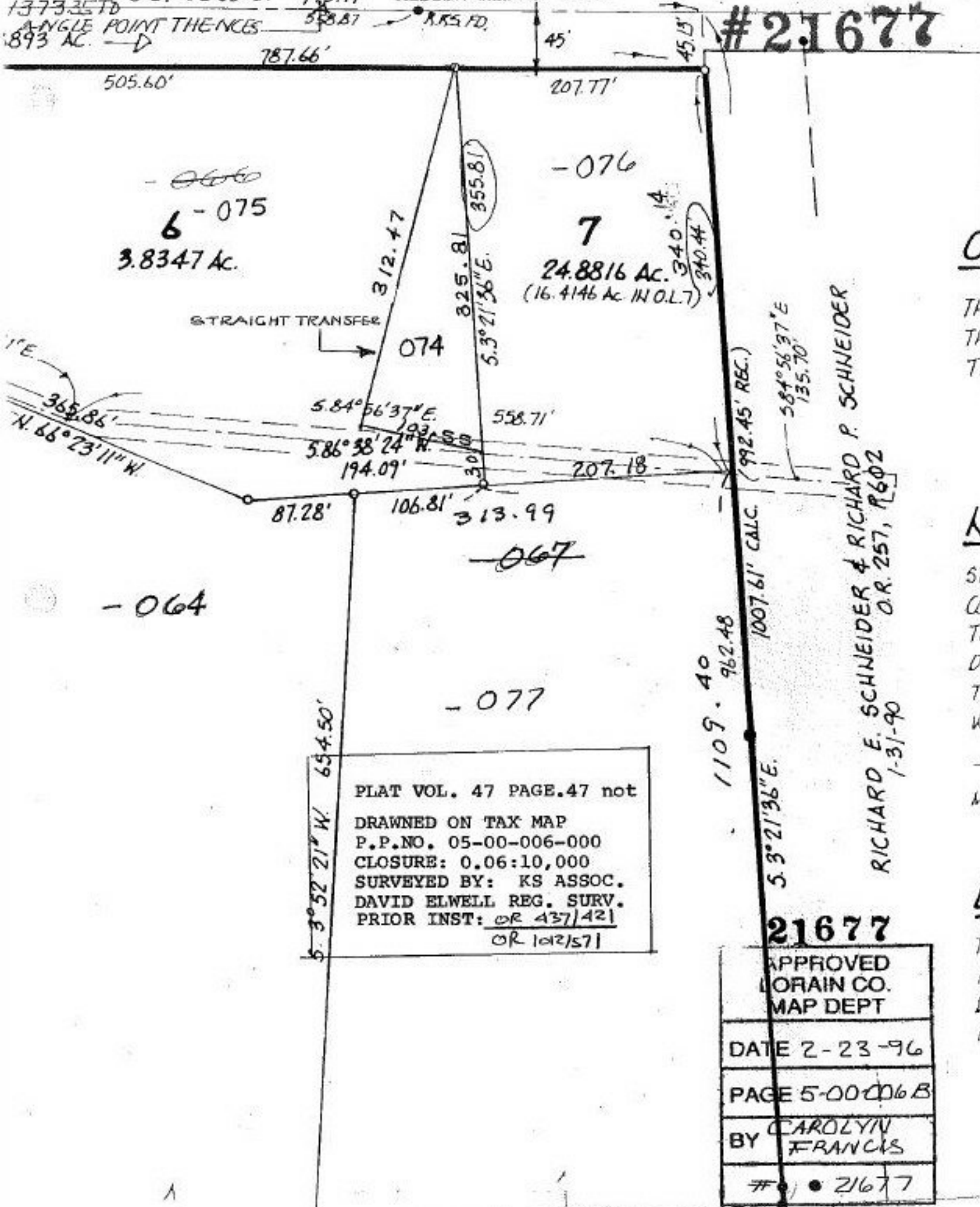


... IN THE HIGHWAY OF CENTERLINE OF MILLING RIDGE RD AND VESTIBULE LINE
 D.L. 6 THENCE S. 89° 02' 00" E. 795.77' MIDDLE RIDGE ROAD
 1373357D
 ANGLE POINT THENCES 588.87' K.K.S. RD.
 893 AC. - D

#21677



~~066~~
 6-075
 3.8347 Ac.

-076
 7
 24.8816 Ac.
 (16.4146 Ac. in O.L.T.)

STRAIGHT TRANSFER
 074
 312.47
 325.81
 5.3° 21' 36" E.
 355.81
 584° 56' 37" E.
 586° 38' 24" W.
 194.09'
 558.71'
 207.18'
 313.99'

-064

-077

PLAT VOL. 47 PAGE.47 not
 DRAWN ON TAX MAP
 P.P.NO. 05-00-006-000
 CLOSURE: 0.06:10,000
 SURVEYED BY: KS ASSOC.
 DAVID ELWELL REG. SURV.
 PRIOR INST: OR 437/421
 OR 102/571

RICHARD E. SCHNEIDER & RICHARD P. SCHNEIDER
 O.R. 257, R602
 1-31-90
 1109.40
 962.48
 1007.61' CALC. (992.45' REG.)
 5.3° 21' 36" E.
 584° 56' 37" E.
 135.70'

21677

APPROVED FORAIN CO. MAP DEPT
DATE 2-23-96
PAGE 5-00-006B
BY CAROLYN FRANCIS
21677

0
 TH
 TH
 TI
 N
 ST
 CL
 TH
 D.
 T.
 W
 -
 N
 E
 T.
 A
 I
 I