

#21670

R 26  
SEE 13-II-026

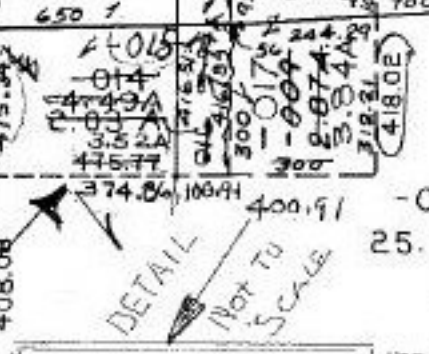
COMBINATION

27  
SEE

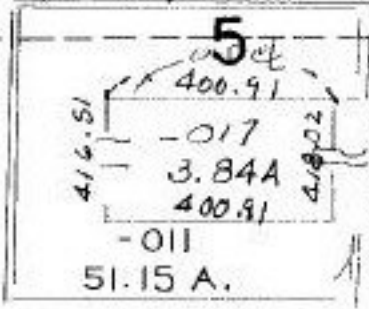
DR. 296/612, 613 R/W EASEMENT TO STATE OF OHIO  
KIPTON - NICKLE - PLATE RD.

(VERMILION RD.)

AL. CORR. PER SURVEY  
JOHN POZYWAIC  
-012 R.S.  
15.63 A. -014  
2.03A  
4.49A



COMB:  
009 2.87A  
016 0.97A  
3.84A



P.P. NO. 13-10-005-000-  
PRIOR INST: (009) O.R. 216/251  
(016) DR 1306/676  
COMBINATION

21670

APPROVED  
LORAIN CO.  
MAP DEPT

DATE 2-15-96

PAGE 13-C

BY CAROLYN  
FRANCIS

#21670

2  
10  
6

540.90

133 525  
376.6  
376.6

2691  
-006  
38.26 A.

2180.10

-007

823.60

504.1

RD.

