

21661

RD.

50

100

846.84

435.63

435.60

-005

1.00 A.

435.60

100

- 242

16.89 A

~~16.54 A~~

P.P.NO. 01-00-017-000-
 PRIOR INST: DV. 860/630 (24)
 CLOSURE: 1:INF. DV. 336/833
 SURVEYED BY: EARL HUNTER
 REG. SURVEYOR

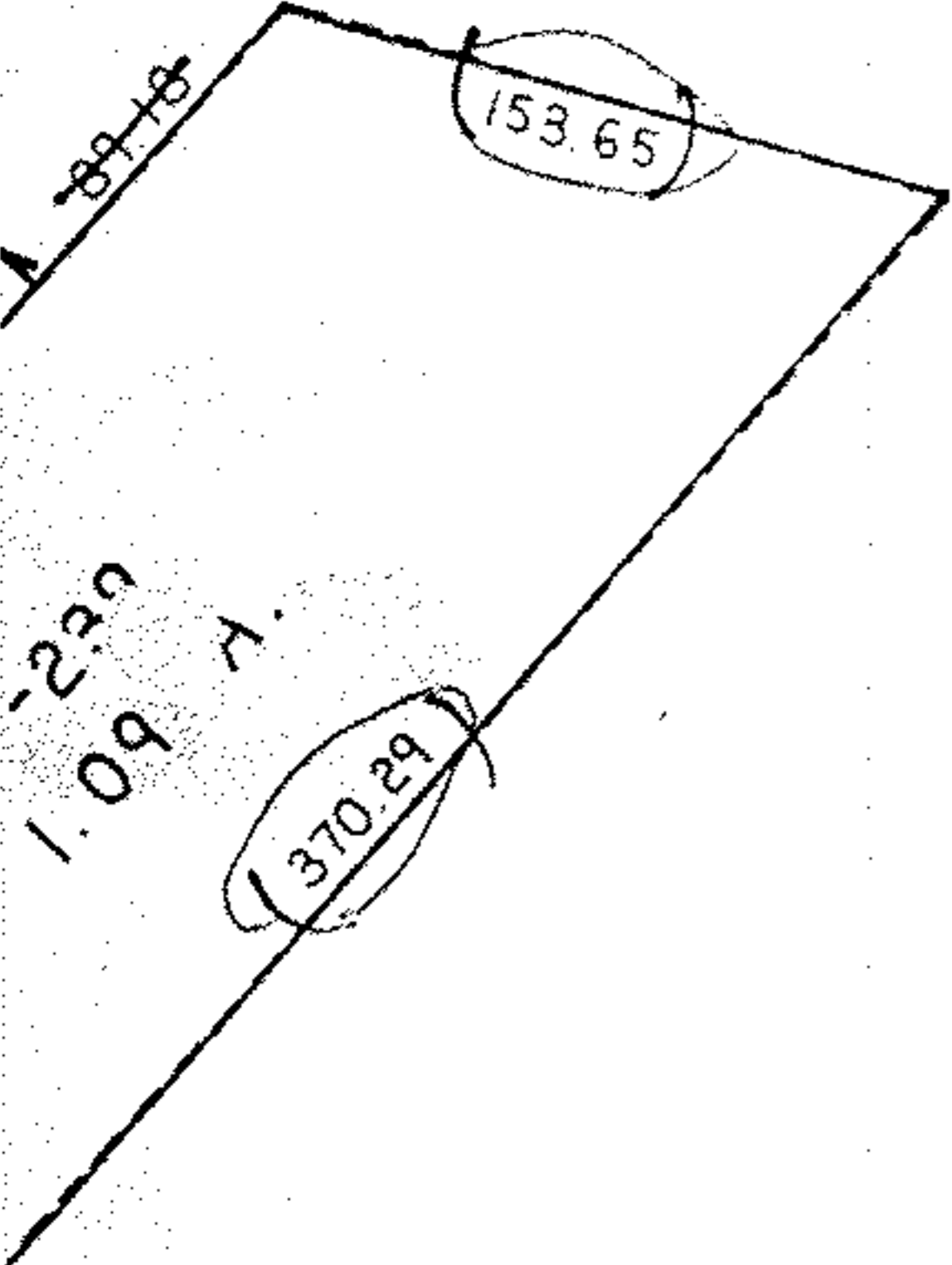
781.16

835.47

IRON SPIKE

186.51
RD.

60



661

PROVED
AIN CO.
DEPT
1-9-96
00-017-B
POLYN
ANCIS
21661