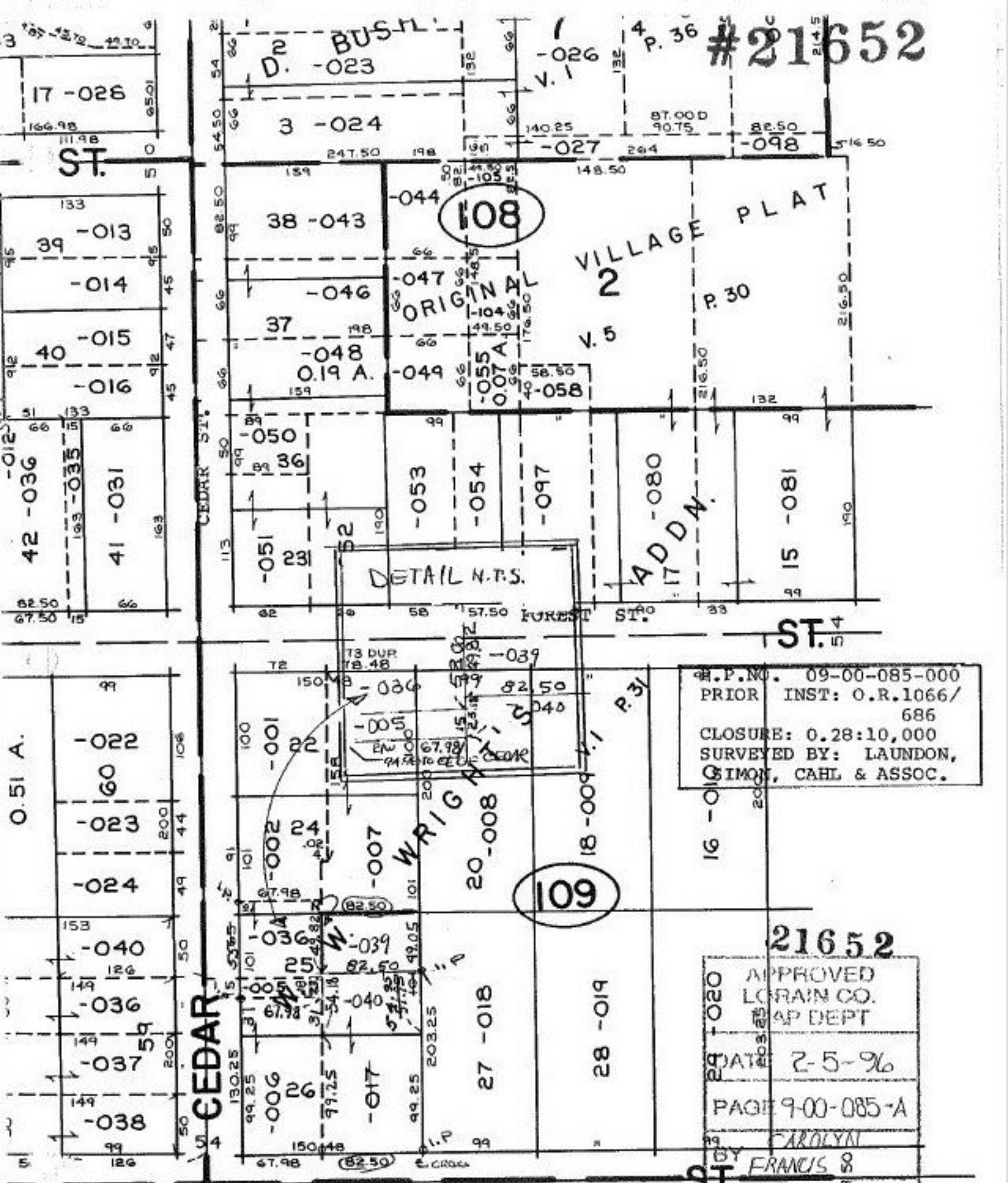


#21652



P. NO. 09-00-085-000
 PRIOR INST: O.R.1066/
 686
 CLOSURE: 0.28:10,000
 SURVEYED BY: LAUNDON,
 SIMON, CAHL & ASSOC.

APPROVED
 LORAIN CO.
 MAP DEPT
 DATE 2-5-96
 PAGE 9-00-085-A
 BY FAROLYN
 FRANCIS

#21652

E 9-00-095-A

49.82 X 82.50 - 039
 82.50 X 153.43 - 040

CEDAR ST.

MORGAN ST.

ST. 4

ST.

108

109

VILLAGE PLAT

DETAIL N.T.S.

ADDN.

ORIGINAL

D. BUSHL. -023

P. 36

P. 30

P. 31

V. 5

V. 1

17-026

3-024

140.25

87.00D
90.75

82.50

-027

-098

516.50

39-013

40-015

42-036

41-031

60-022

60-023

60-024

60-040

60-036

60-037

60-038

38-043

37-046

37-048

36-050

36-051

36-053

36-054

36-058

39-039

39-040

20-008

27-018

28-019

22-001

22-002

25-036

26-006

26-017

36-007

36-039

36-040

36-040

36-080

36-081

36-081

36-081

36-081

36-081

36-081

36-081

36-081

36-081

36-080

36-081

36-081

36-081

36-081

36-081

36-081

36-081

36-081

36-081

21652

FAROLYN

FRANCIS

#21652