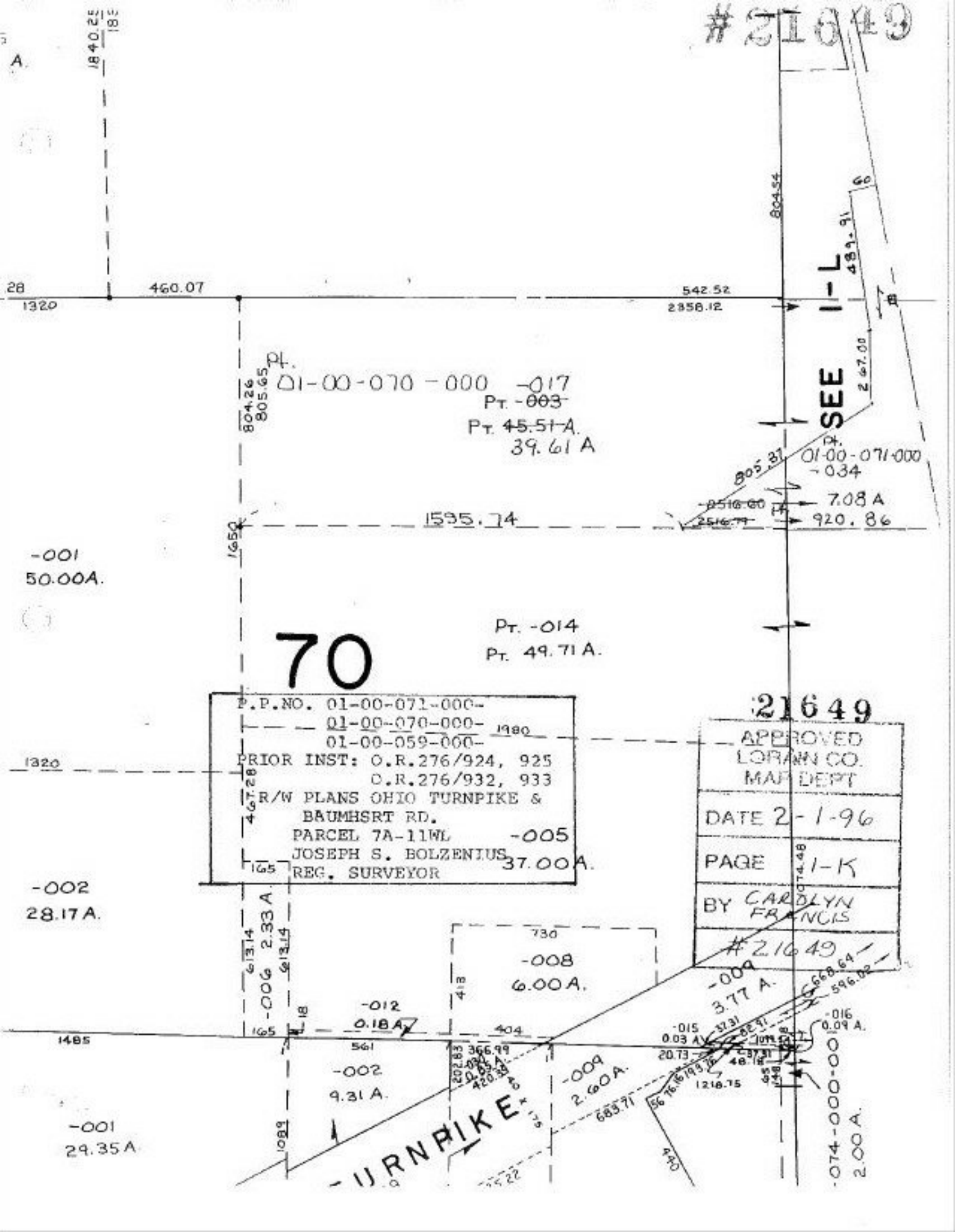


21649



Pt. 01-00-070-000 -017
Pt. -003
Pt. 45.51 A.
39.61 A

SEE I-L
Pt. 01-00-071-000 -034
7.08 A
920.86

70
Pt. -014
Pt. 49.71 A.

P.P.NO. 01-00-071-000-
01-00-070-000- 1980
01-00-059-000-
PRIOR INST: O.R.276/924, 925
O.R.276/932, 933
R/W PLANS OHIO TURNPIKE &
BAUMHSRT RD.
PARCEL 7A-11WL -005
JOSEPH S. BOLZENIUS 37.00 A.
REG. SURVEYOR

21649
APPROVED
LORANN CO.
MAP DEPT
DATE 2-1-96
PAGE 41-K
BY CAROLYN FRANCIS
21649

-001
50.00A.

-002
28.17A.

-001
29.35A.

730
-008
6.00A.

-012
0.18A

-002
9.31 A.

-009
2.60A.

-016
0.09 A.

-074-000-000
2.00 A.

TURNPIKE