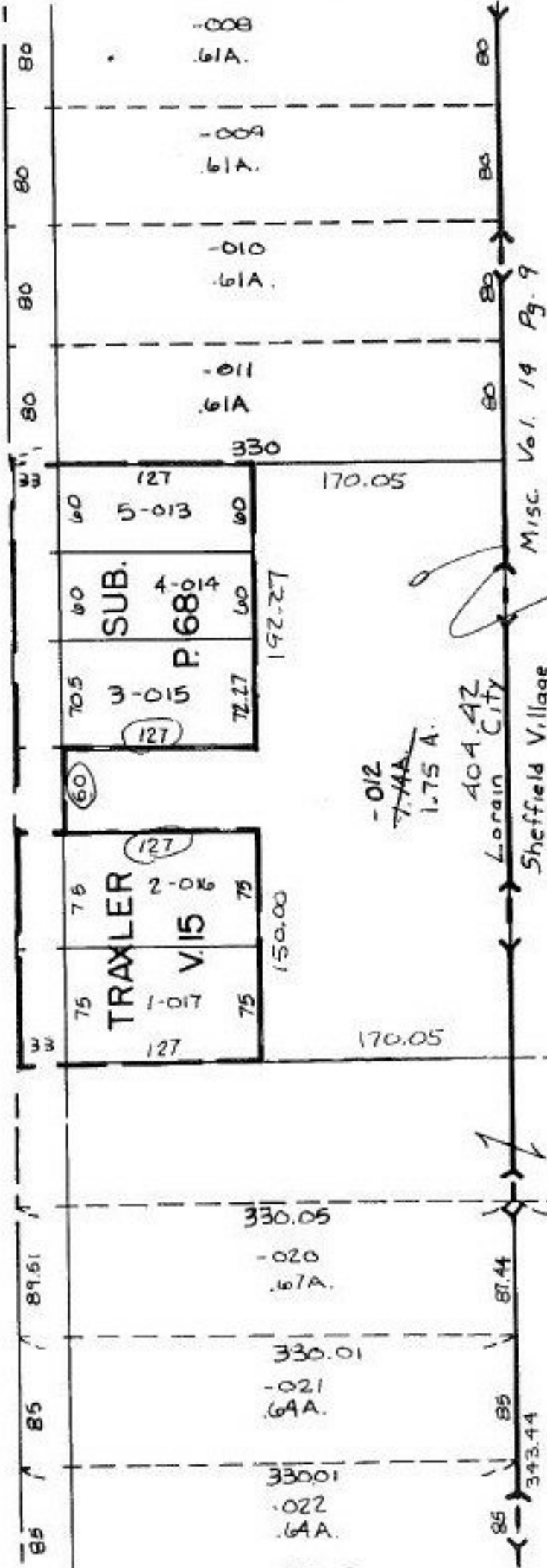


#21644-A



ACCREAGE CORR
 PER DV. 1189/658
 & SURVEY BY ENVIRO-
 TECH CONSULTANTS INC
 TRAXLER SUB FILED FOR
 RECORD 6/10/53
 BY RAY HOLLIS, PS
 * LARGE ACCE CORRECT.
 DUE TO 60' WIDG EXHT.
 BETWEEN SIC 2 & 3
 THAT WAS TREATED AS AN
 EXCEPTION TO -012

#21644-A

APPROVED
 LORAIN CO.
 MAP DEPT.
 2-2-96
 3-00-058-A
 T. M. Hill
 21644-A

ACCREAGE
CORRECTION