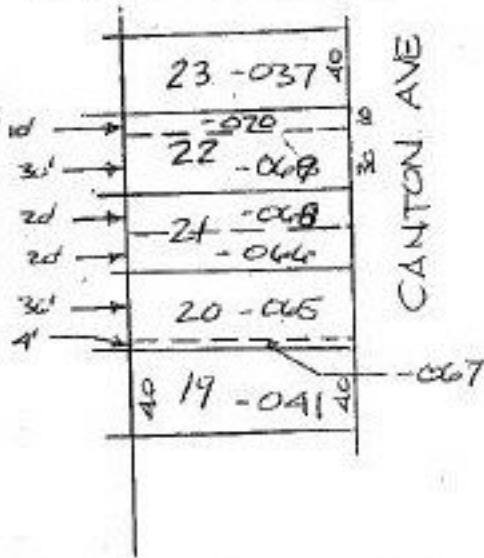


DETAIL N.T.S.



03-00-103-114

#21641-X

112.03	1 - 017	112.16
112.16	29-031	112.03
112.16	28-032	112.03
112.03	27-033	112.16
112.16	26-034	112.03
112.03	25-035	112.16
112.16	24-036	112.03

57.57	112.03	112.03
10-009	1	112.16
112.16	112.16	112.16

22-04	112.16	112.16
60-001	30-031	112.16
40	112.03	112.03
59-002	29-032	112.16
58-003	28-033	112.16
57-004	27-034	112.16
56-005	26	112.16
55-006	25-035	112.16
54-007	24-036	112.16
53-008	23-037	112.16
900.00	22-038	112.16
52-009	21-039	112.16
51-010	20-040	112.16
50-011	19-041	112.16
49-012	18-042	112.16
48-013	17-043	112.16
47-014	16-044	112.16
46-015	15-045	112.16
45-016	14-046	112.16
44-017	13-047	112.16
43-018	12-048	112.16
42-019	11-049	112.16
41-020	10-050	112.16
40-021	9-051	112.16
39-022	8-052	112.16

-007	23-034
-008	22-035
-009	21-036
-010	20-037
-011	19-038
-012	18-039
-013	17-040
-014	16-041
-015	15-042
-016	14-043
-017	13-044
-018	12-045
-019	11-046
-020	10-047
-021	9-048

52	23-037
51	22-038
50-010	21-039
49-011	20-040
48-012	19-041
47-013	18-042
46-014	17-043
45-015	16-044
44-016	15-045
43-017	14-046
42-018	13-047
41-019	12-048
40-020	11-049
39-021	10-050
38-022	9-051
37-023	8-052

P.P. NO. 03-00-103-114
PRIOR INST: 18-042
CLOSURE: 1: INF.
SURVEYED BY: BEMBA K. JONES
P.S. & ASSOC. INS. R.S 7343

PARCEL NO. CORRECTION #21641-X

APPROVED
LORAIN CO. MAP DEPT.
DATE 1-12-96
PAGE 3-00-103-B
BY T. McMan
21641-X

NOTE - PARCELS SHOWN IN BOWES ARE STILL GOOP AS PER THIS CORRECTION

FROM A INTERSECTION OF 39th St. Canton Ave

OMAHA AVE.

