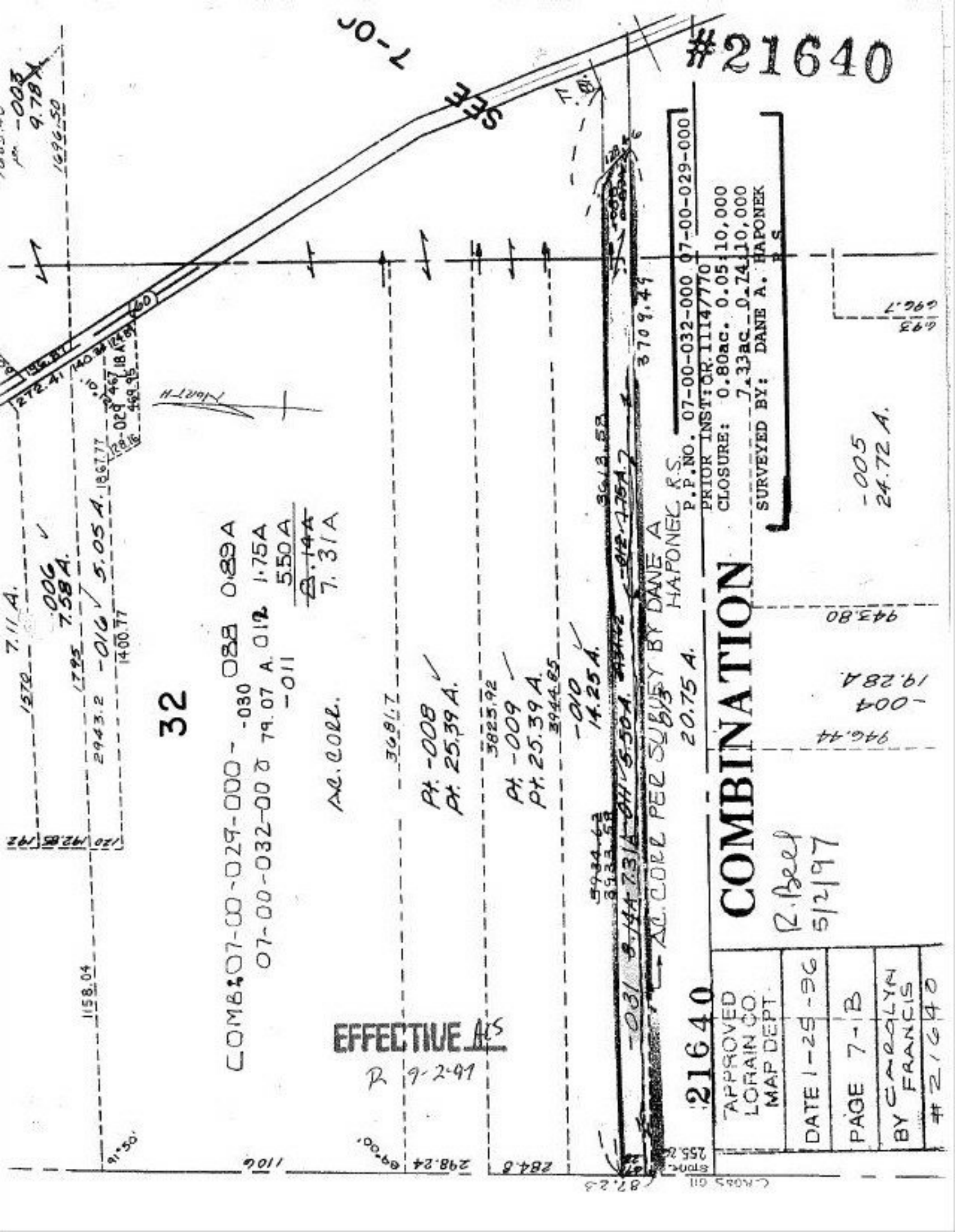


#21640

7-01



32

COMB 07-00-029-000 - 088 0.89 A
 07-00-032-000 0 79.07 A. 012 1.75 A
 -011 550 A
~~8.14 A~~
 7.31 A

AC. COLL.

3681.7

PT. -008 ✓
 PT. 25.39 A.
 PT. -009 ✓
 PT. 25.39 A.
 3944.85

-010 14.25 A.

5934.63
3933.58

AC. COLL PER SUBSEY BY DANE A HAPONEK R.S. 20.75 A.

HAPONEK R.S.

P.P. NO. 07-00-032-000 07-00-029-000

PRIOR INST: OR. 1114/770

CLOSURE: 0.80ac. 0.05: 10,000

7.33ac. 0.74: 10,000

SURVEYED BY: DANE A. HAPONEK

COMBINATION

R. Beel
5/2/97

21640

APPROVED LORAIN CO. MAP DEPT.
DATE 1-25-96
PAGE 7-B
BY CAROLYN FRANCIS
21640

946.44
-004
19.28 A.
943.80
-005
24.72 A.

693
696.7

EFFECTIVE AS

R 9-2-97

1158.04

1510 7.11 A.
 1795 7.58 A.
 2943.2 -016 5.05 A. 1867.77
 1400.77

272.41 1402
 18-029 467.18 1849
 469.95

1003.40
 1003
 9.78 A.
 1696.50

120 192.85 192

91.50

1106

8900

298.24

284.6

82.25

5700

255.26

C:\MOSS 011