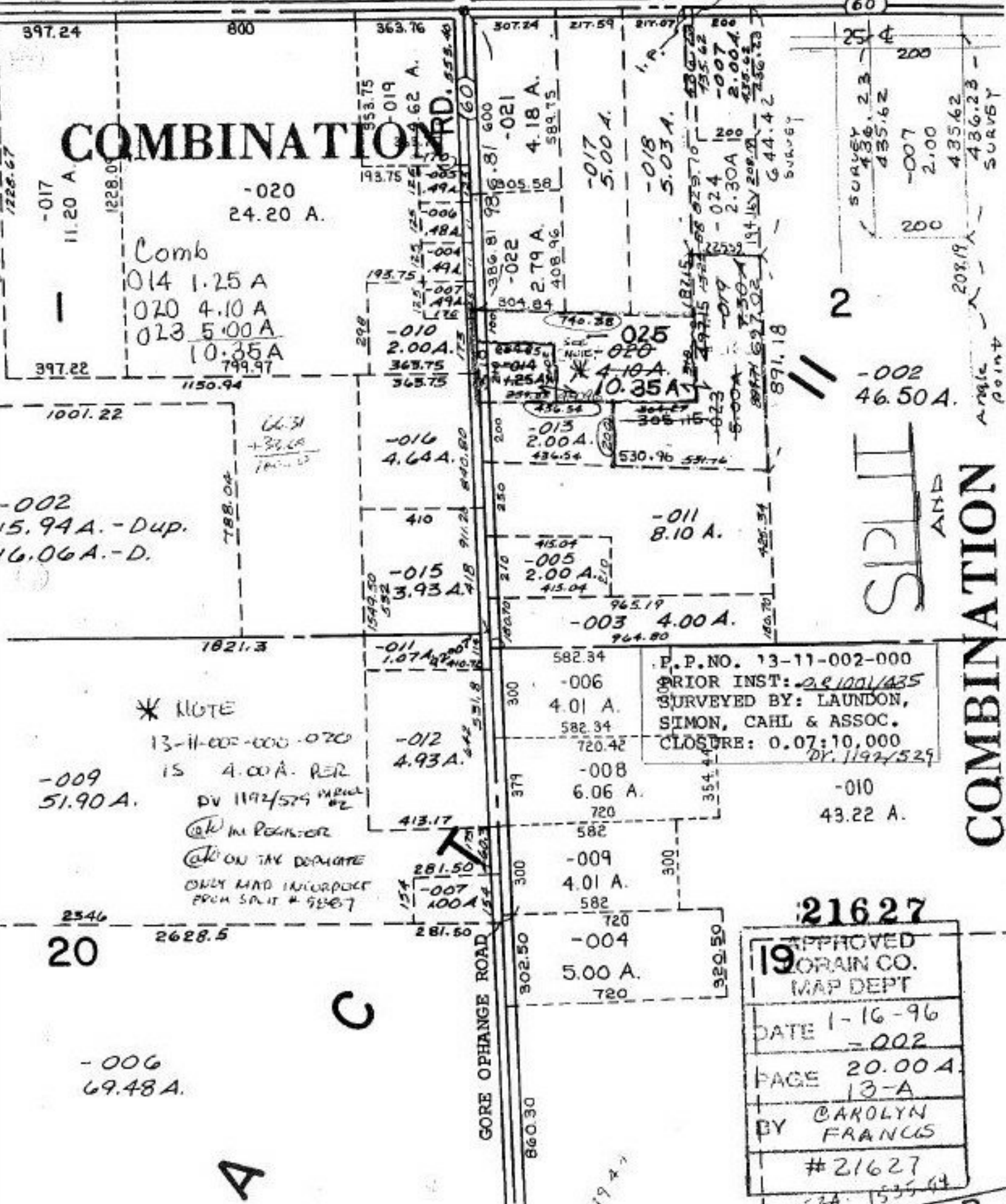


#21627

BATES ROAD

RD.

COMBINATION



Comb
 014 1.25 A
 020 4.10 A
 023 5.00 A
 10.35 A

* NOTE
 13-11-002-000-020
 IS 4.00 A. PER
 DV 1192/529
 @k in REG-OR
 @k ON TAX DEPOSITE
 ONLY MAP INCORPORATED
 FROM SPLIT # 9887

P.P.NO. 13-11-002-000
 PRIOR INST: 281001/435
 SURVEYED BY: LAUNDON,
 SIMON, CAHL & ASSOC.
 CLOSURE: 0.07:10,000
 DR. 1192/529

21627
 APPROVED
 19 CORAIN CO.
 MAP DEPT
 DATE 1-16-96
 -002
 PAGE 20.00 A.
 13-A
 BY CAROLYN
 FRANCIS
 #21627
 1534 1535 64
 65A R. F.