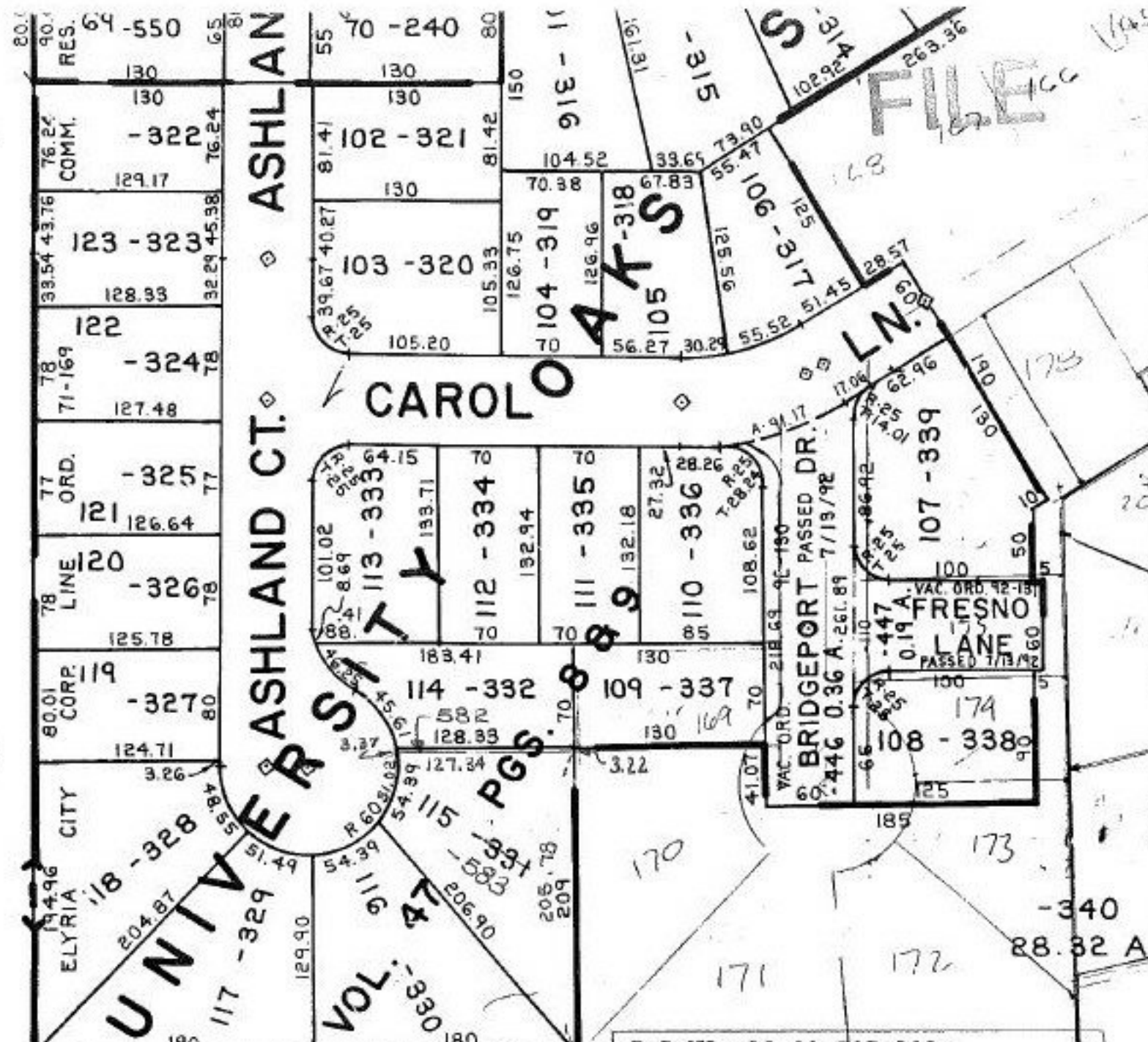


SEE



P. D. NO. 10-00-005-101-
 PRIOR INST. _____
 CLOSURE: 0.01:10,000
 SURVEYED BY: KSA DAVID ELWELL
 REG. SURVEYOR

21626
 APPROVED
 LORAIN CO.
 MAP DEPT
 DATE 1-12-96
 PAGE 10-00-005 A
 BY CAROLYN
 FRANCIS
 # 21626