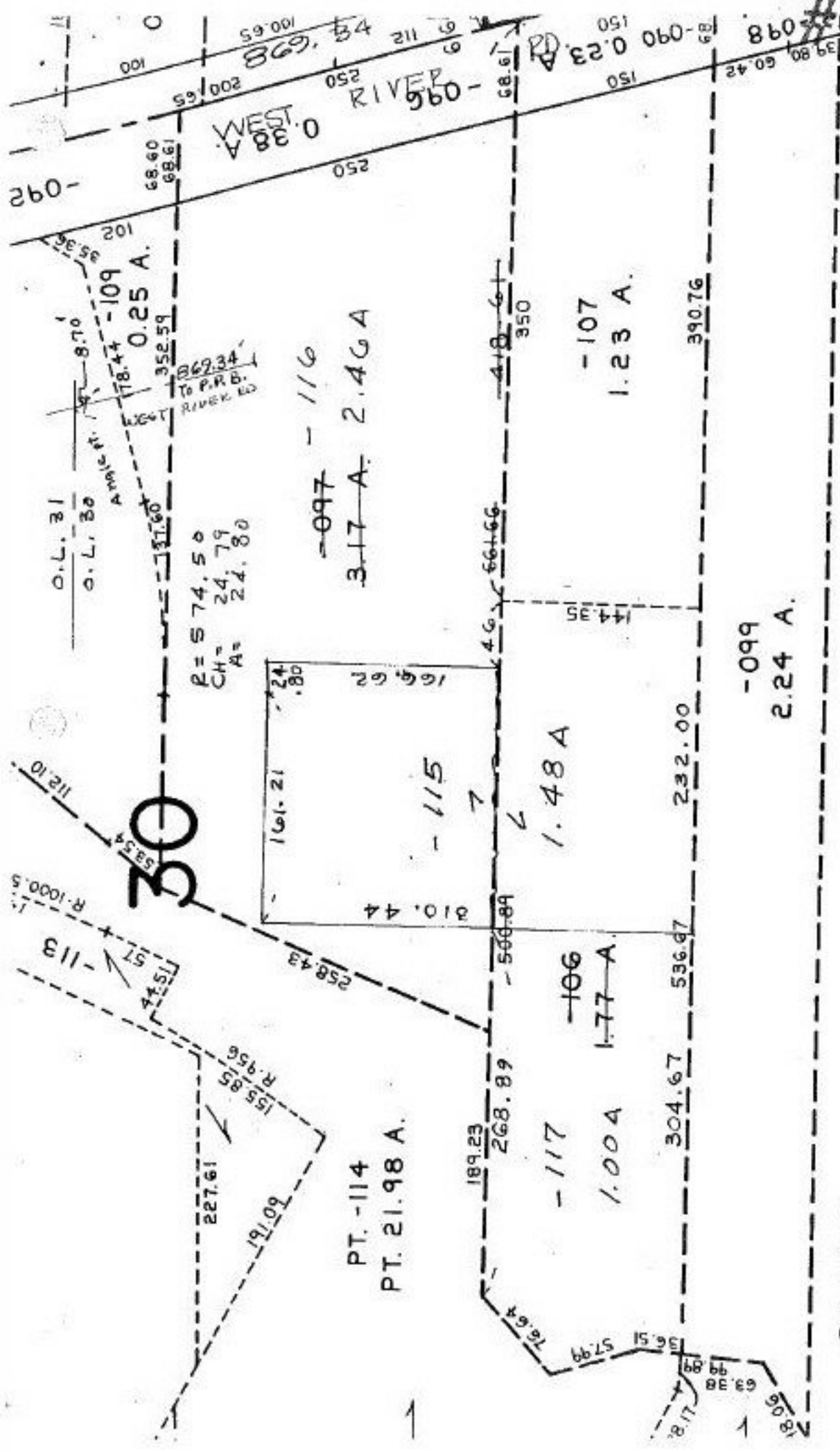


#21625



SEE 6-65

P.P. NO. 06-24-030-000
 PRIOR INST. O.R.V. 176/973 (106)
 (097) DV. 108/778 P. 5
 CLOSURE: 0.07: 0.000
 SURVEYED BY: KSA DAVID ELWELL
 REG. SURVEYOR

SEE



#21625

APPROVED LORAIN CO. MAP DEPT
DATE 1-11-96
PAGE 6 - 47
BY CAROLYN FRANCIS
#21625