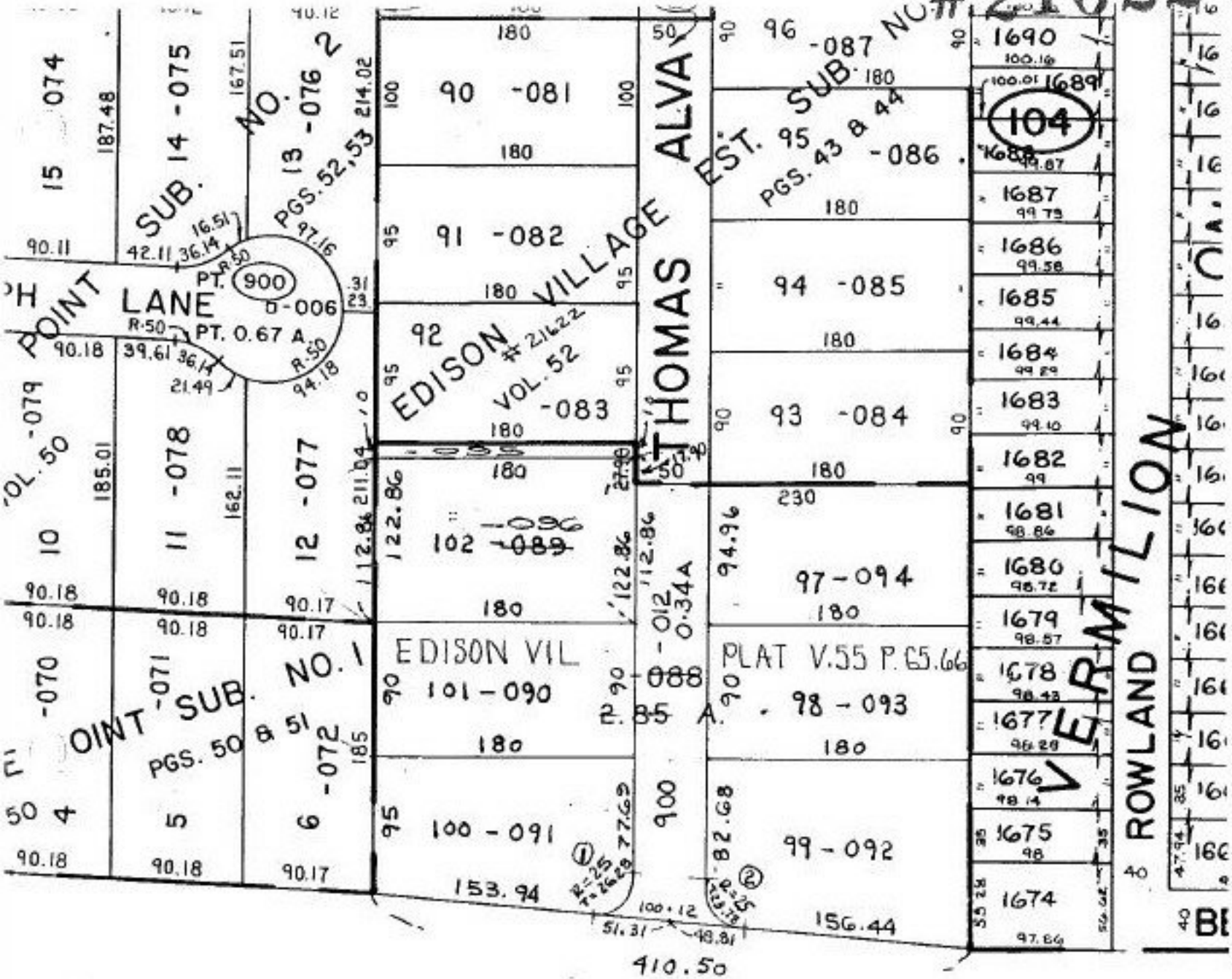


#21622



~~VELAND-SANDUSKY (LAKE) (~~

ARC 40.52	ARC 39.04
R= 25.00	R= 25.00
T 26.28	T 23.78

P.P.NO. 01-00-002-101-
 PRIOR INST:
 CLOSURE: 1:INF.
 SURVEYED BY: LOWELL E. BENDER
 REG. SURVEYOR GRINDLE & BENDER

SEE 1-

21622

APPROVED LORAIN CO. MAP DEPT
DATE 1-10-96
PAGE 1-00-002 A
BY CAROLYN FRANCIS
#21622