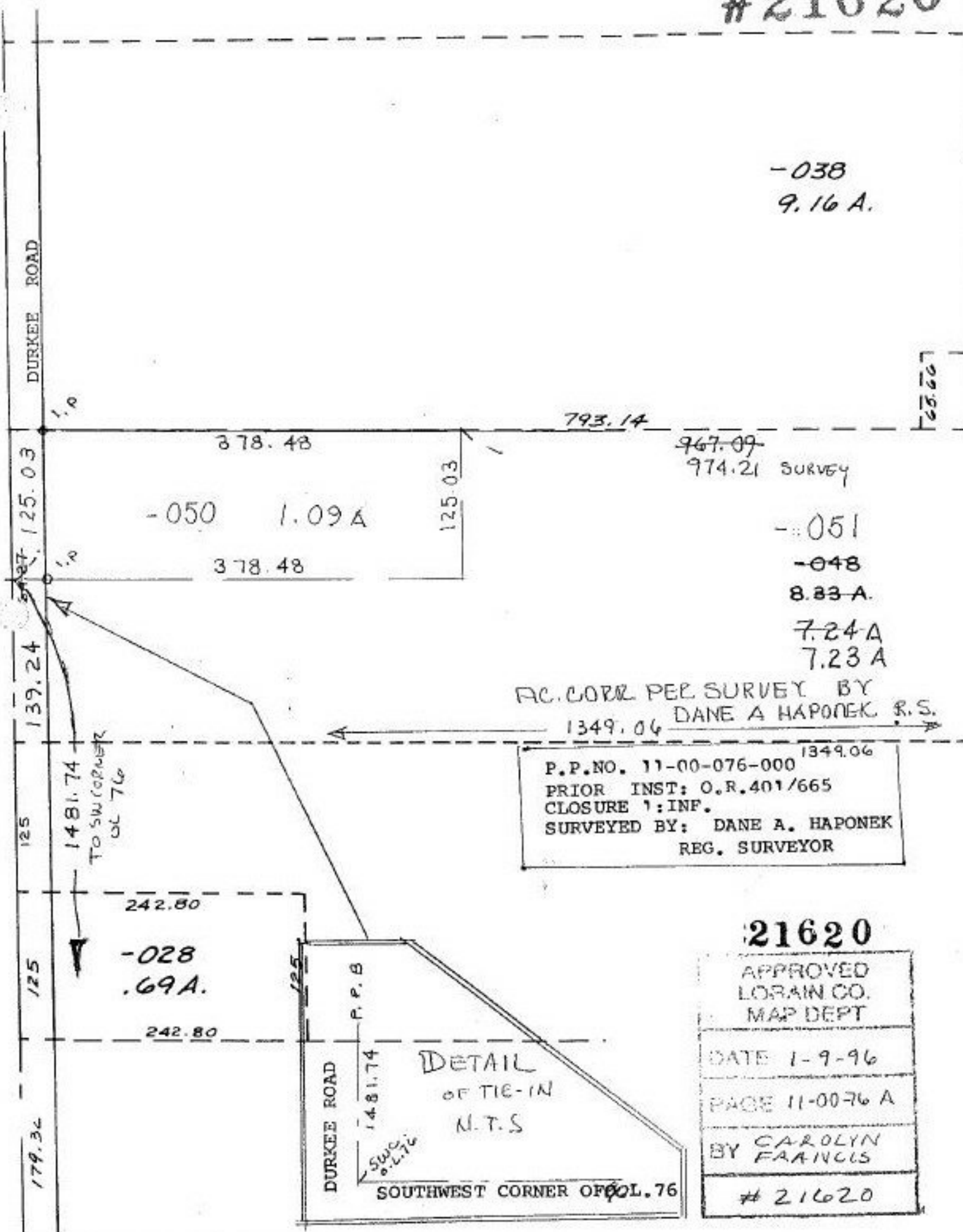


#21620

-038
9.16 A.



DURKEE ROAD

125.03

139.24

125

125

179.34

378.48

378.48

793.14

967.09
974.21 SURVEY

65.60

-050 1.09 A

-051

-048

8.83 A.

7.24 A

7.23 A

AC. CORR PEE SURVEY BY
1349.06 DANE A HAPONEK R.S.

P.P. NO. 11-00-076-000
 PRIOR INST: O.R. 401/665
 CLOSURE 1: INF.
 SURVEYED BY: DANE A. HAPONEK
 REG. SURVEYOR

1481.74
TO SW CORNER
of 76

242.80

-028
.69 A.

242.80

125

DURKEE ROAD

P.P. B

1481.74

SWC
of 76

DETAIL
OF TIE-IN
N.T.S

SOUTHWEST CORNER OF 76

21620

APPROVED
LORAIN CO.
MAP DEPT

DATE 1-9-96

PAGE 11-00-76 A

BY CAROLYN
FRANCIS

#21620