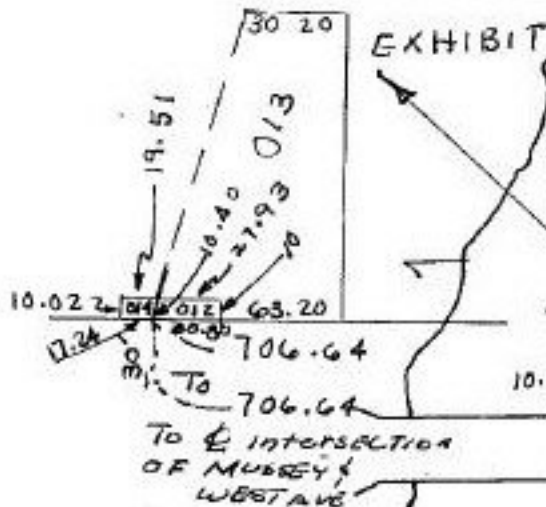


Pt. - 06-24-118 - 000 -
 Pt. 17.71A - 007 -
 17.71A - 008

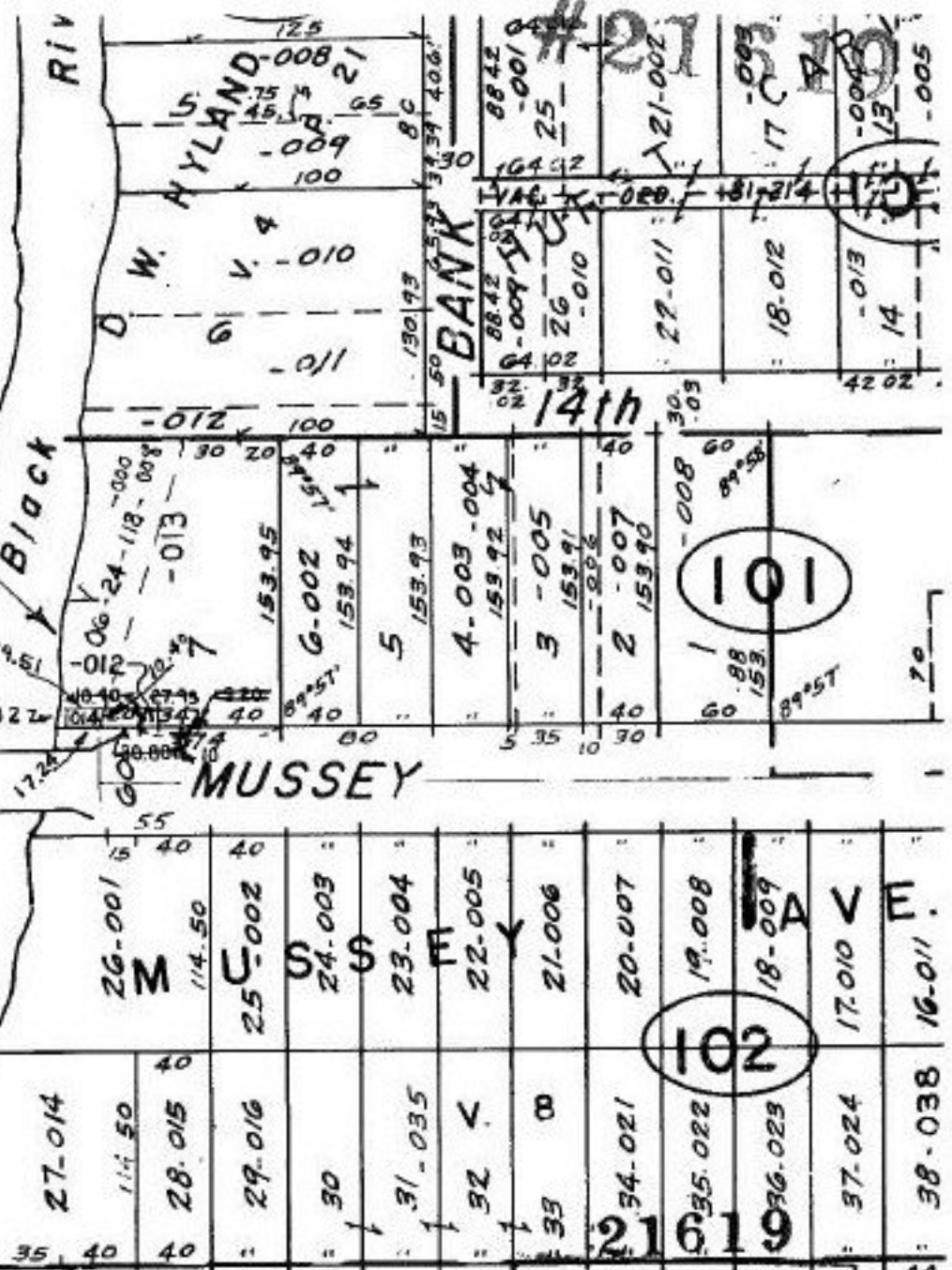


06-26-001-101-014
 PARCEL 10WD
 18450 FT.
 0.004 A.
 17.24 X 10.40

ELYRIA CITY
 R/W PLANS
 MUSSEY AVE

P.P.NO. 06-24-118-000
 06-26-001-101
 PRIOR INST. DV.1394/763
 CLOSURE: 1; INF.
 ELYRIA R/W PLANS
 MUSSEY AVE PARCEL 10WD
 SURVEYED BY: DAVID A. ARMSTRONG
 RICHLAND ENG.CO. REG. SURVEYOR

copyright 1963
 12-4-95
6-137



APPROVED
 LOFTIS CO.
 MAP DEPT

DATE 1-8-96
SEE 10-00-003-C
 PAGE 6-137
 BY CAROLYN FRANCIS

BETWEEN THE RIVERS LOT
10,15,18, 23, 26
E-LY LOTS 9, 16,17, 24, 2