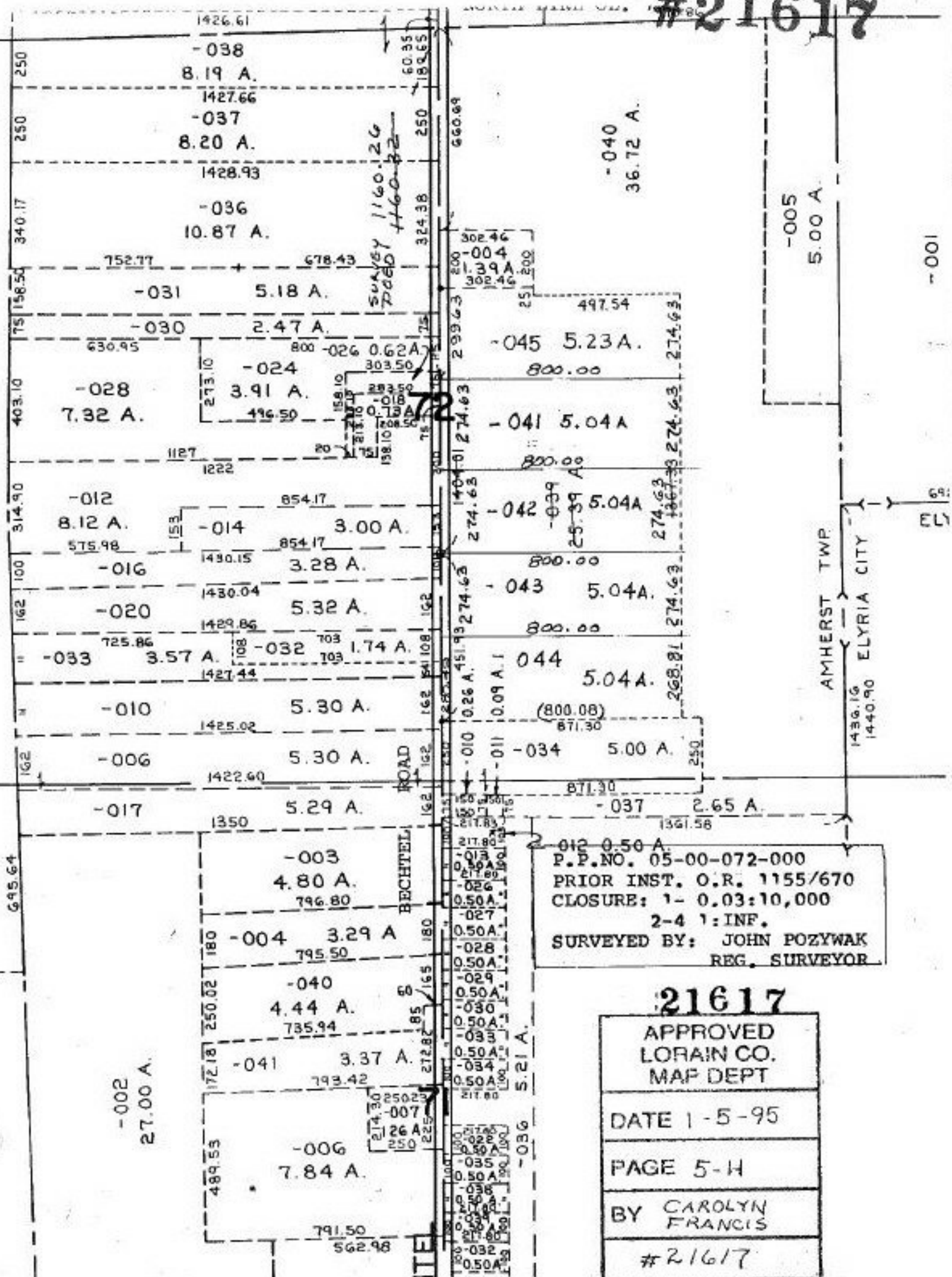


# #21617



012 0.50 A.  
 P.P.NO. 05-00-072-000  
 PRIOR INST. O.R. 1155/670  
 CLOSURE: 1- 0.03:10,000  
 2-4 1:INF.  
 SURVEYED BY: JOHN POZYWAK  
 REG. SURVEYOR

**21617**  
 APPROVED  
 LORAIN CO.  
 MAP DEPT  
 DATE 1-5-95  
 PAGE 5-H  
 BY CAROLYN  
 FRANCIS  
 #21617