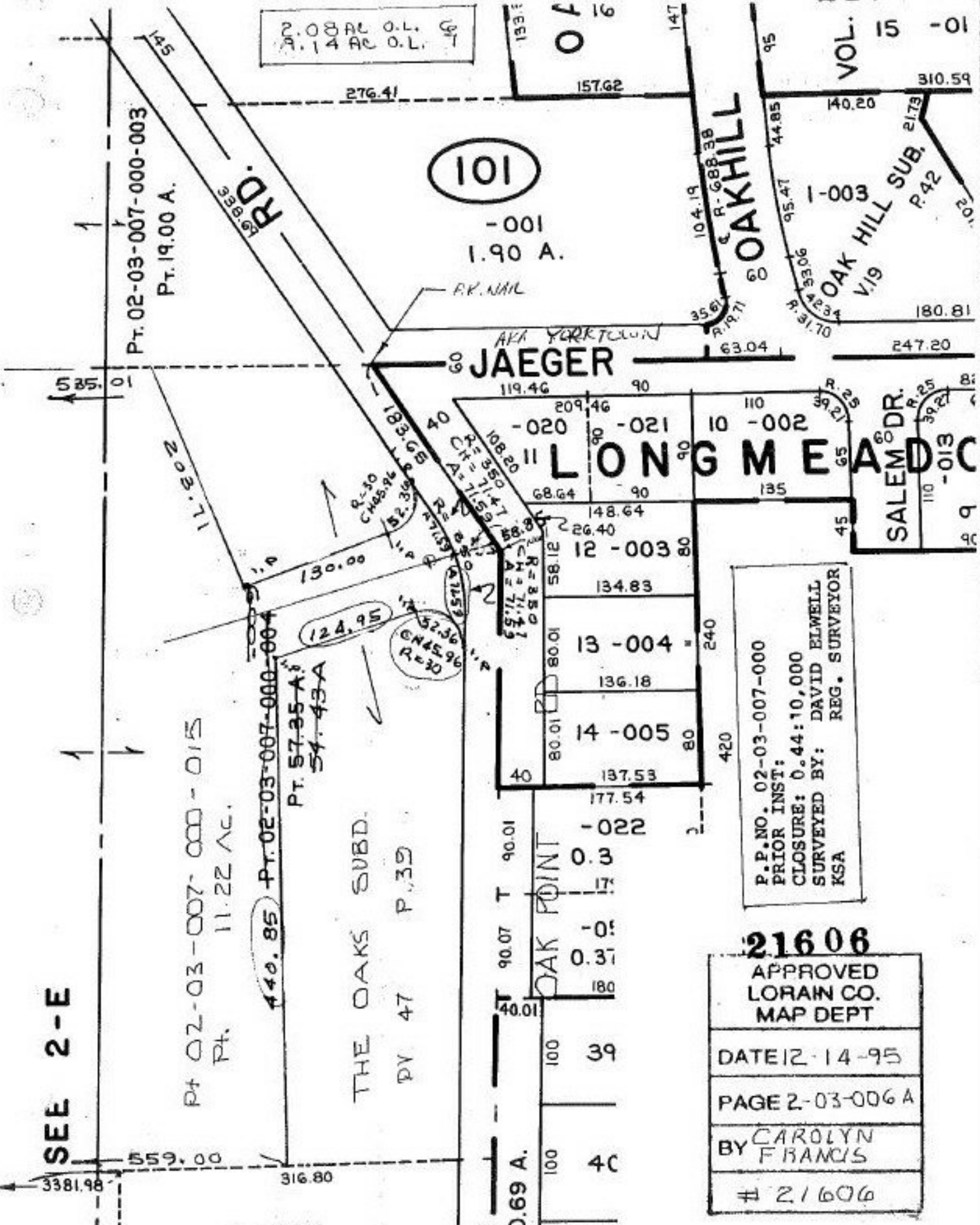


SEE 2-E



P. P. NO. 02-03-007-000
 PRIOR INST:
 CLOSURE: 0.44:10,000
 SURVEYED BY: DAVID ELWELL
 KSA REG. SURVEYOR

21606
 APPROVED
 LORAIN CO.
 MAP DEPT
 DATE 12-14-95
 PAGE 2-03-006 A
 BY CAROLYN
 FRANCIS
 # 21606