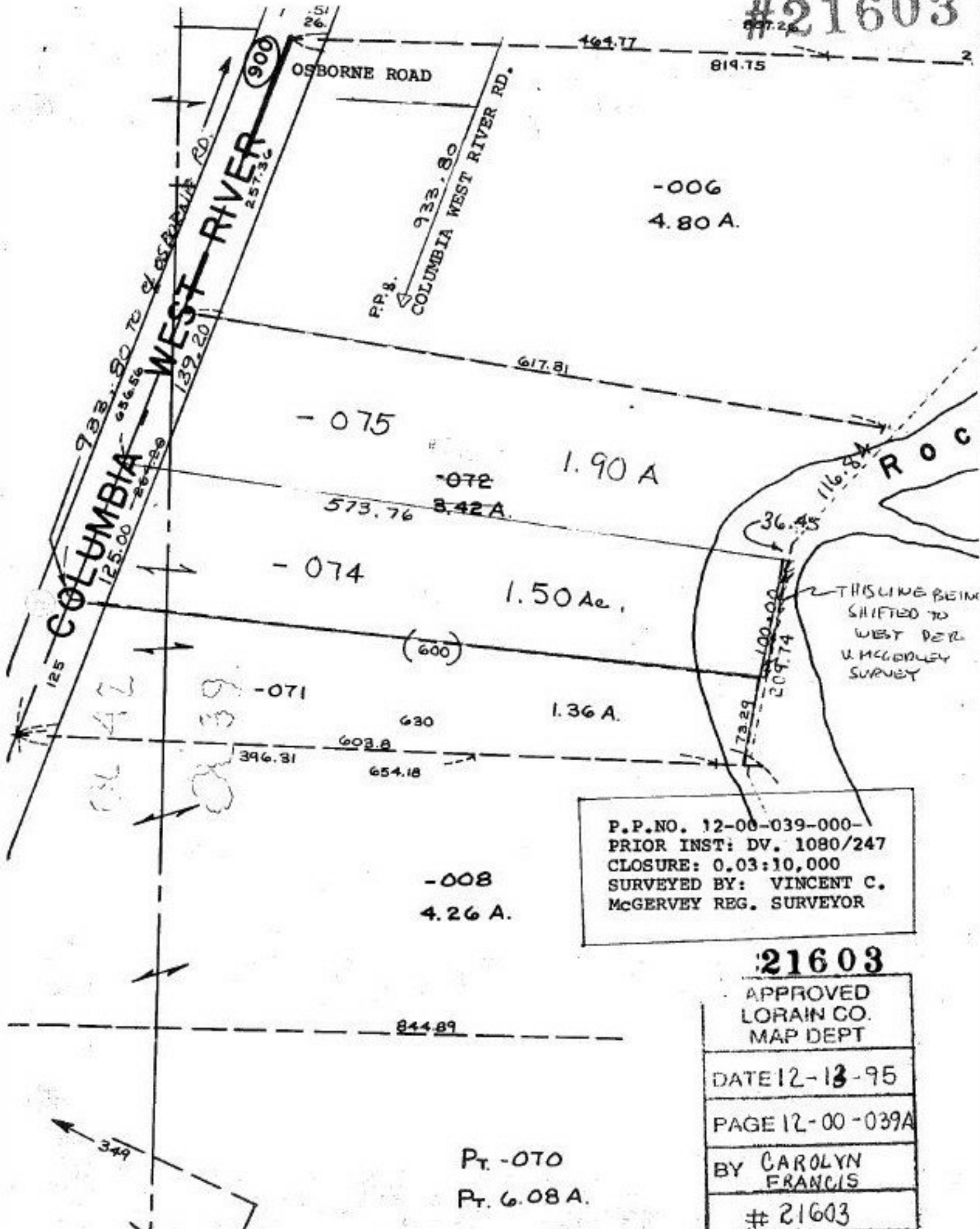


#21603



P.P. NO. 12-00-039-000-
 PRIOR INST: DV. 1080/247
 CLOSURE: 0.03:10,000
 SURVEYED BY: VINCENT C.
 McGERVEY REG. SURVEYOR

21603

APPROVED
 LORAIN CO.
 MAP DEPT

DATE 12-13-95

PAGE 12-00-039A

BY CAROLYN
 FRANCIS

21603