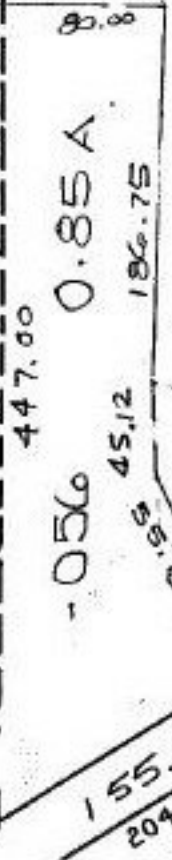


912.5



-012
+6.90 A.

-057

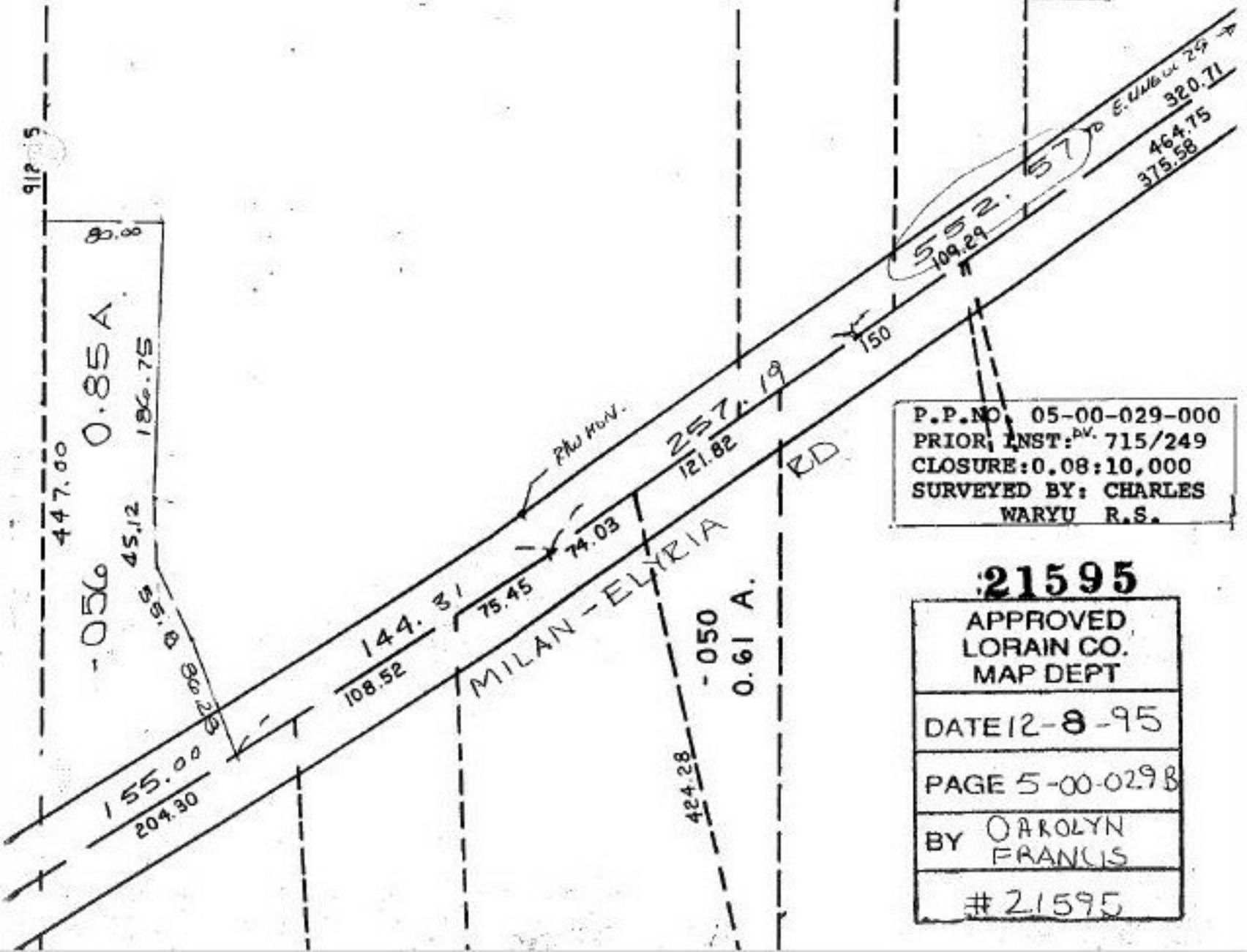
16.05 A

- (3.0

#21595

984.17
-055
1.95 A.
920.94

BEGINNING AT INTERSECTION OF EAST LINE OF C.L. 29 WITH THE CENTER LINE OF MILAN-ELYRIA RD.



P.P. NO. 05-00-029-000
PRIOR INST. NO. 715/249
CLOSURE: 0.08:10,000
SURVEYED BY: CHARLES WARYU R.S.

21595

| |
|------------------------------------|
| APPROVED LORAIN CO. MAP DEPT |
| DATE 12-8-95 |
| PAGE 5-00-029B |
| BY CAROLYN FRANCIS |
| #21595 |