

05-00-091-

101

-013
52.19 A.

T.D. 01

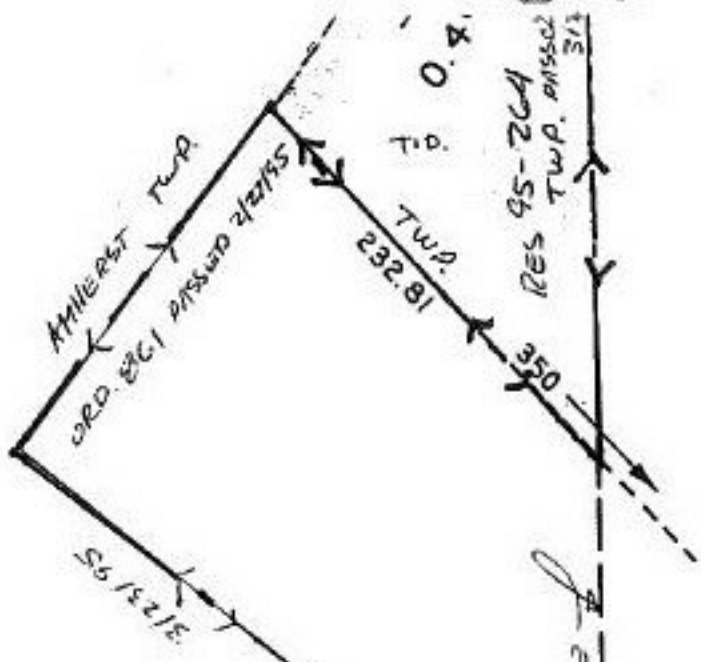
ANNEXATION

#21591-X

APPROVED	
LORAIN CO.	
MAP DEPT.	
DATE 12-14-95	
PAGE 5-00091-B	
BY T. M. Klein	
VOID AFTER	21591-X

ANNEXATION

LOR. CO. COM. H.
 RES. 95-264
 PASSED 3/23/95
 S. AMHERST VILLAGE
 ORD. 861
 PASSED 2/27/95



102

-013
2.81 A.

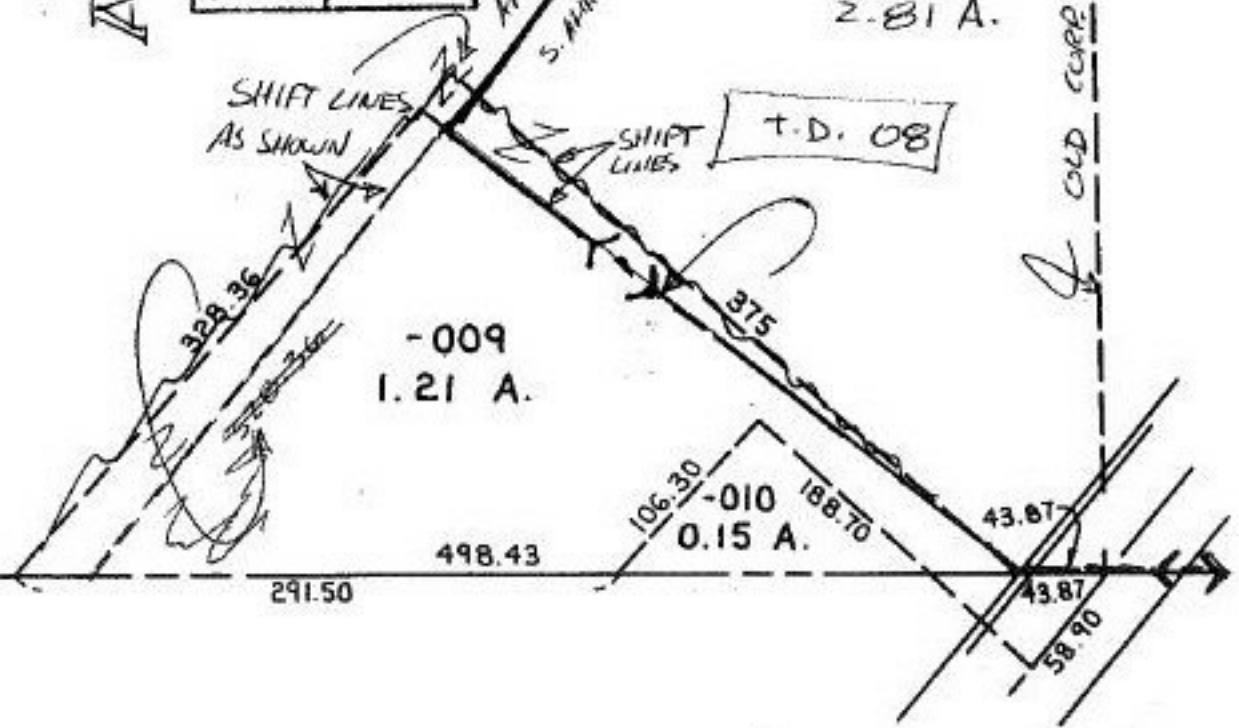
T.D. 08

SHIFT LINES
AS SHOWN

SHIFT LINES

-009
1.21 A.

-010
0.15 A.



OLD CURVE LINE WAS 759.31 MUNG THIS LINE