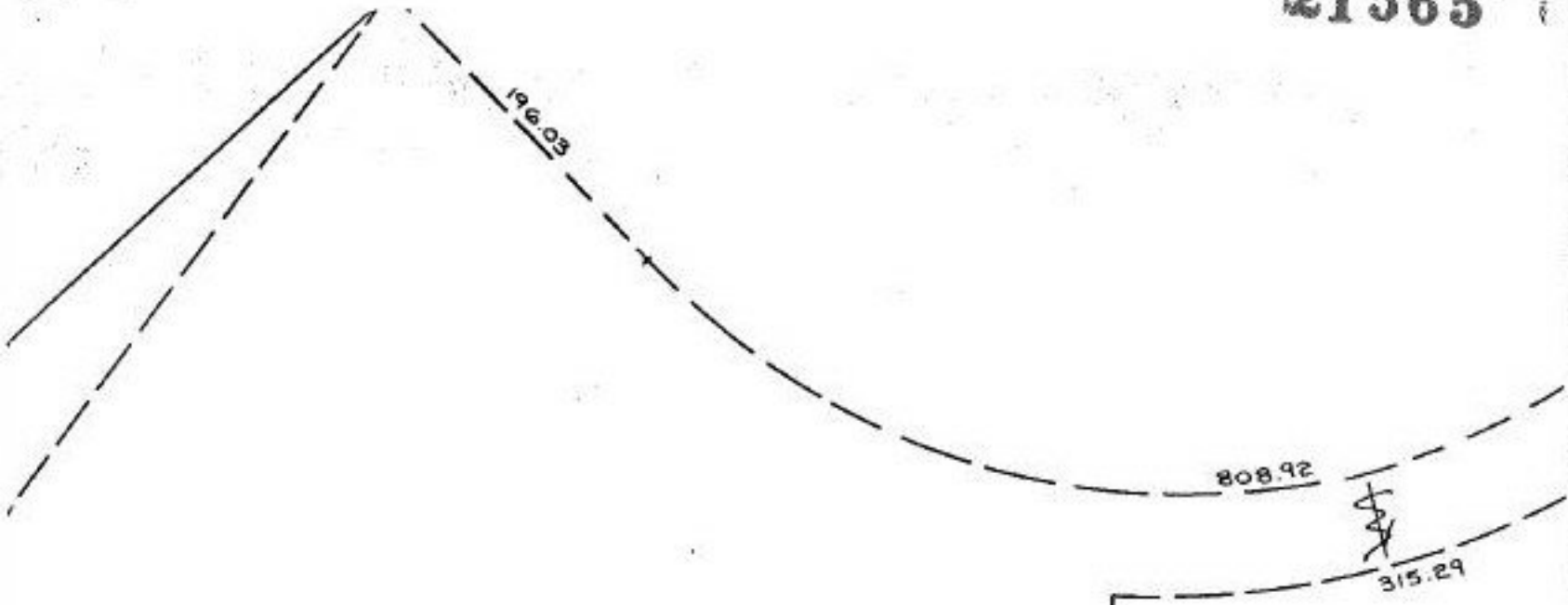


21565



SPUT.

09-00-090-000-102-29.52 A

080-000-029 +4.63 A

TOTAL 34.15 A

SPUT-080-000-029 4.79 A

Rem: 09-00-090-000-104 29.36 A

O.L. 80 4.63 A

O.L. 90 0.16 A

TOTAL 4.79 A

634.48

-091

5.00 A.

P.P.NO.	09-00-090-000
	09-00-080-000
PRIOR INST:	DV. 930/600

A^m - 104

-102

29.52 A.

A. 29.36 A

21565

APPROVED LORAIN CO. MAP DEPT
DATE 11-28-95
PAGE 9-00-090 B
BY CAROLYN FRANCE
#21565