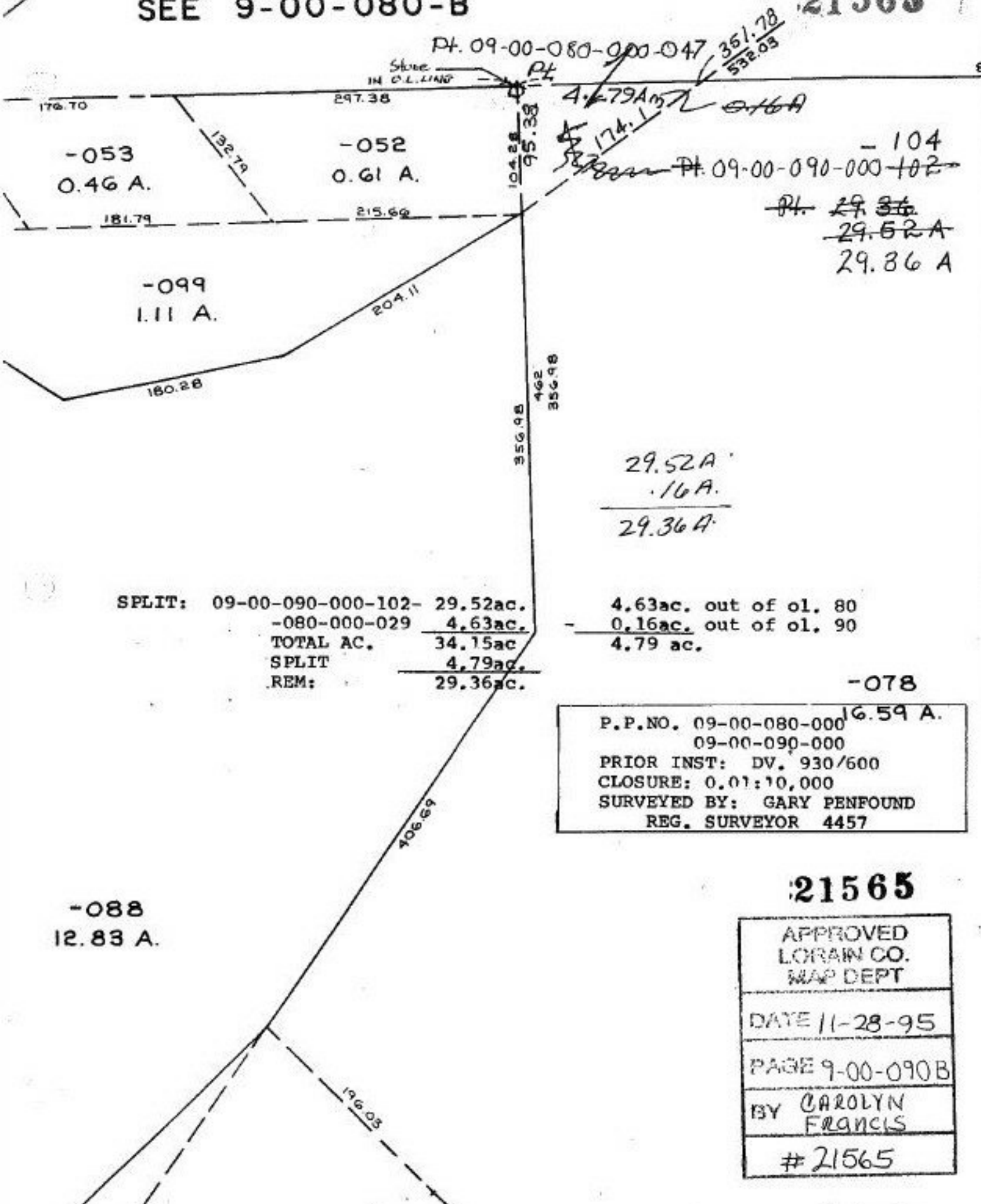


SEE 9-00-080-B

21565



-053
0.46 A.

-052
0.61 A.

-099
1.11 A.

-104

Pt. 09-00-090-000-102

~~Pt. 29.36~~
~~29.52 A~~
 29.36 A

29.52 A
 .16 A

 29.36 A

SPLIT: 09-00-090-000-102- 29.52ac.
 -080-000-029 4.63ac.
 TOTAL AC. 34.15ac
 SPLIT 4.79ac.
 REM: 29.36ac.

4.63ac. out of ol. 80
 - 0.16ac. out of ol. 90

 4.79 ac.

-078

P.P.NO. 09-00-080-000 16.59 A.
 09-00-090-000
 PRIOR INST: DV. 930/600
 CLOSURE: 0.01:10,000
 SURVEYED BY: GARY PENFOUND
 REG. SURVEYOR 4457

-088
12.83 A.

21565

APPROVED
 LORAIN CO.
 MAP DEPT

 DATE 11-28-95

 PAGE 9-00-090B

 BY CAROLYN
 FRANCIS

 # 21565