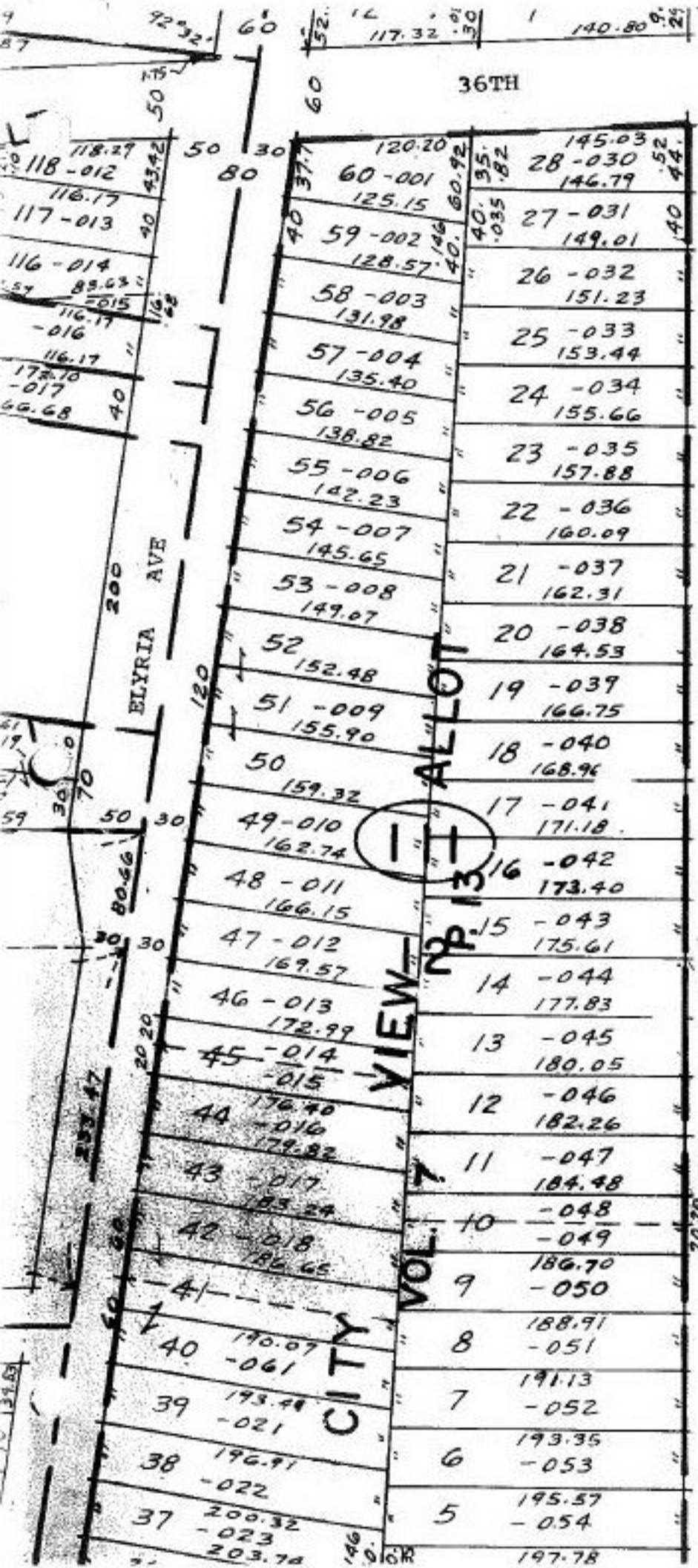


#21562



36TH		ST.	
120.20	145.03	125.15	125.15
60-001	28-030	56-001	28-029
125.15	146.79	125	125
59-002	27-031	55-002	27-030
128.57	149.01	54-003	26-031
58-003	26-032	53-004	25-032
131.98	151.23	52-005	24-033
57-004	25-033	51-006	23-034
135.40	153.44	50-007	22-035
56-005	24-034	49-008	21-036
138.82	155.66	48-009	20-037
55-006	23-035	47-010	19-038
142.23	157.88	46-011	18-039
54-007	22-036	45-012	17-040
145.65	160.09	44-013	16-041
53-008	21-037	43-014	15-042
149.07	162.31	42-015	14-043
52	20-038	41-016	13-044
152.48	164.53	P.P. NO. 03-00-103-112	
51-009	19-039	PRIOR INST: OR 1002, P. 466	
155.90	166.75	CLOSURE: 1: INF.	
50	18-040	SURVEYED BY: BEMBA K. JONES	
159.32	168.96	P.S. & ASSOC. INS. R.S. 7348	
49-010	17-041	21562	
162.74	171.18	APPROVED	
48-011	16-042	LORAIN CO.	
166.15	173.40	MAP DEPT	
47-012	15-043	DATE 11-27-95	
169.57	175.61	PAGE 3-00-103-A	
46-013	14-044	BY CAROLYN	
172.99	177.83	FRANCIS	
45-014	13-045	#21562	
176.40	180.05		
44-015	12-046		
179.82	182.26		
43-016	11-047		
183.24	184.48		
42-017	10-048		
186.65	186.70		
41-018	9-049		
190.07	188.91		
40-019	8-050		
193.48	191.13		
39-020	7-051		
196.91	193.35		
38-021	6-052		
200.32	195.57		
37-022	5-053		
203.74	197.78		