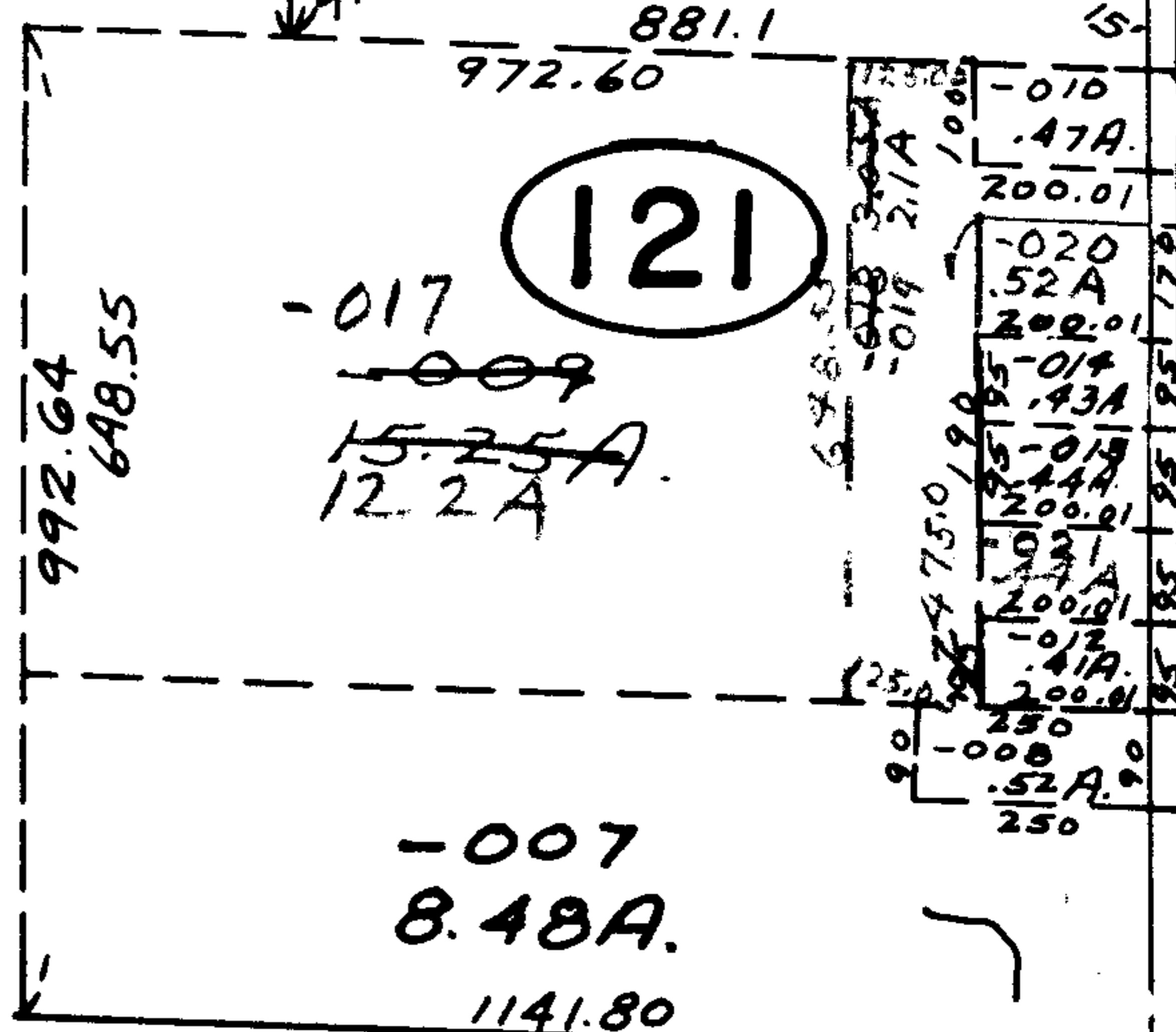


0-003-D

2156

4

SEE 1-00-004-C #2
2156



2761

-007
8.48A.
1141.80

-001
51.88 F.

-002
9.96 F.
986.14

986

2741.15

13

-003
50.00 F.

APPROVED
LORAIN CO.
MAP DEPT.

DATE 10/8/68

Pg 1-B

BY
R. J. Kelly

-004
29.62 F.

(50)

87°32'30"

660.27

92°47'

1107.57

90°18'30"

222.20

90°05'

1633.25

915 -003
950 2.74 F.

-002
3.08 F.

416 120 260

867.32
-010
7.85 F.

7.91 310.44

-003
4.84 F.
1360±

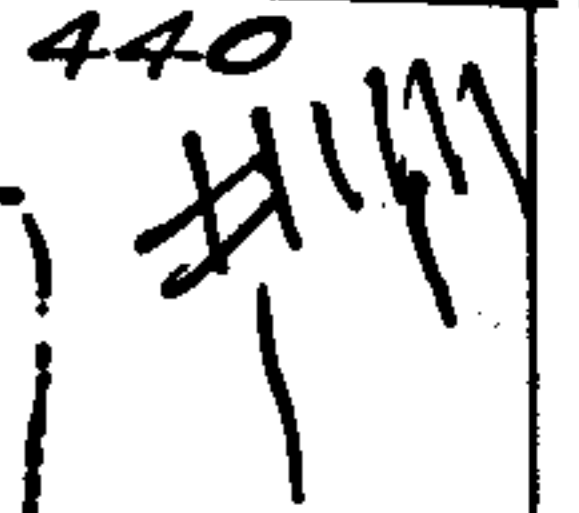
-001
4.76 F.

88°09 1/2'

440

440

986.14



88°15'

-010
.47A.
200.01

-020
.52A
200.01

-018
.43A
200.01

-019
.44A
200.01

-017
.41A
200.01

-016
.42A
200.01

-015
.43A
200.01

-014
.44A
200.01

-013
.45A
200.01

-012
.46A
200.01

-011
.47A
200.01

-010
.48A
200.01

-009
.49A
200.01

-008
.50A
200.01

-007
.51A
200.01

-006
.52A
200.01

-005
.53A
200.01

-004
.54A
200.01

-003
.55A
200.01

-002
.56A
200.01

-001
.57A
200.01

-000
.58A
200.01

-000
.59A
200.01

-000
.60A
200.01

-000
.61A
200.01

-000
.62A
200.01

-000
.63A
200.01

-000
.64A
200.01

-000
.65A
200.01

SUNNYSIDE

5(50)?

RD. 52

119.28

102

100

100

100

100

100

100

100

100

100

100

100

100

100

100

100

100