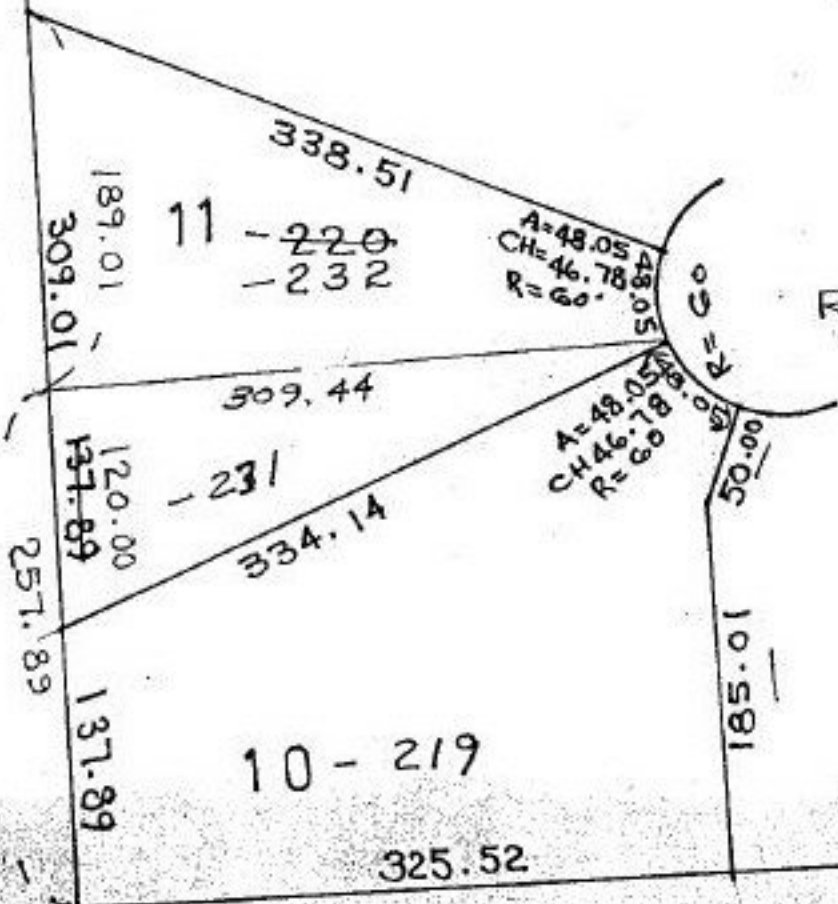


REASER INDUSTRIAL PARK

VOL 54 PG 54, 55



REASER CT. 60'

P.P. NO. 06-25-007-000
 PRIOR INST: PV 54, Pgs. 54, 55
 CLOSURE: 0.03:10,000
 SURVEYED BY: J. REAR & Assoc.

SPLIT: SCALE 1" = 100'

APPROVED LORAIN CO. MAP DEPT
DATE 10-27-95
PAGE 6-125
BY CAROLYN FRANCIS
21548