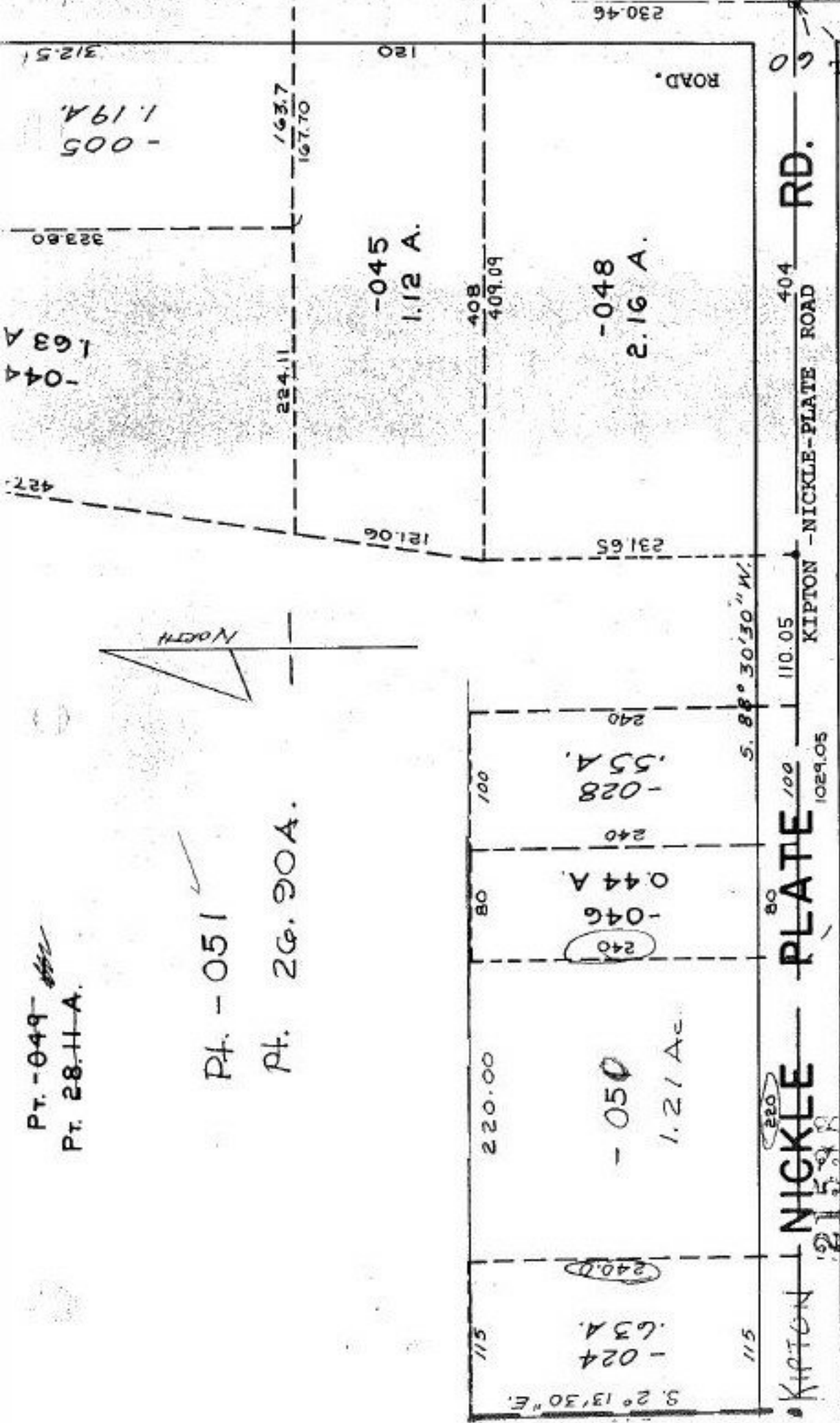
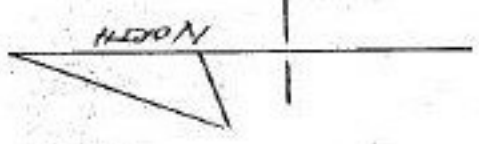


Pt. -049-  
Pt. 28-H-A.

Pt. -051  
Pt. 26.90A.



NICKLE PLATE DIAGONAL

RD.

404  
KIPTON - NICKLE-PLATE ROAD

110.05  
KIPTON - NICKLE-PLATE ROAD

1029.05  
RD.

80  
PLATE

220  
NICKLE

115  
KIPTON

694.05

APPROVED
LORAIN CO.
MAP DEPT
DATE 10-24-95
PAGE 15-00-070 B
BY CAROLYN
FRANCIS
# 21538

P.P. NO. 15-00-020-000-  
 PRIOR INST: O.R. 312/120  
 CLOSURE: 1: INF.  
 SURVEYED BY: JOHN POZYWAK  
 REG. S. SURVEYOR