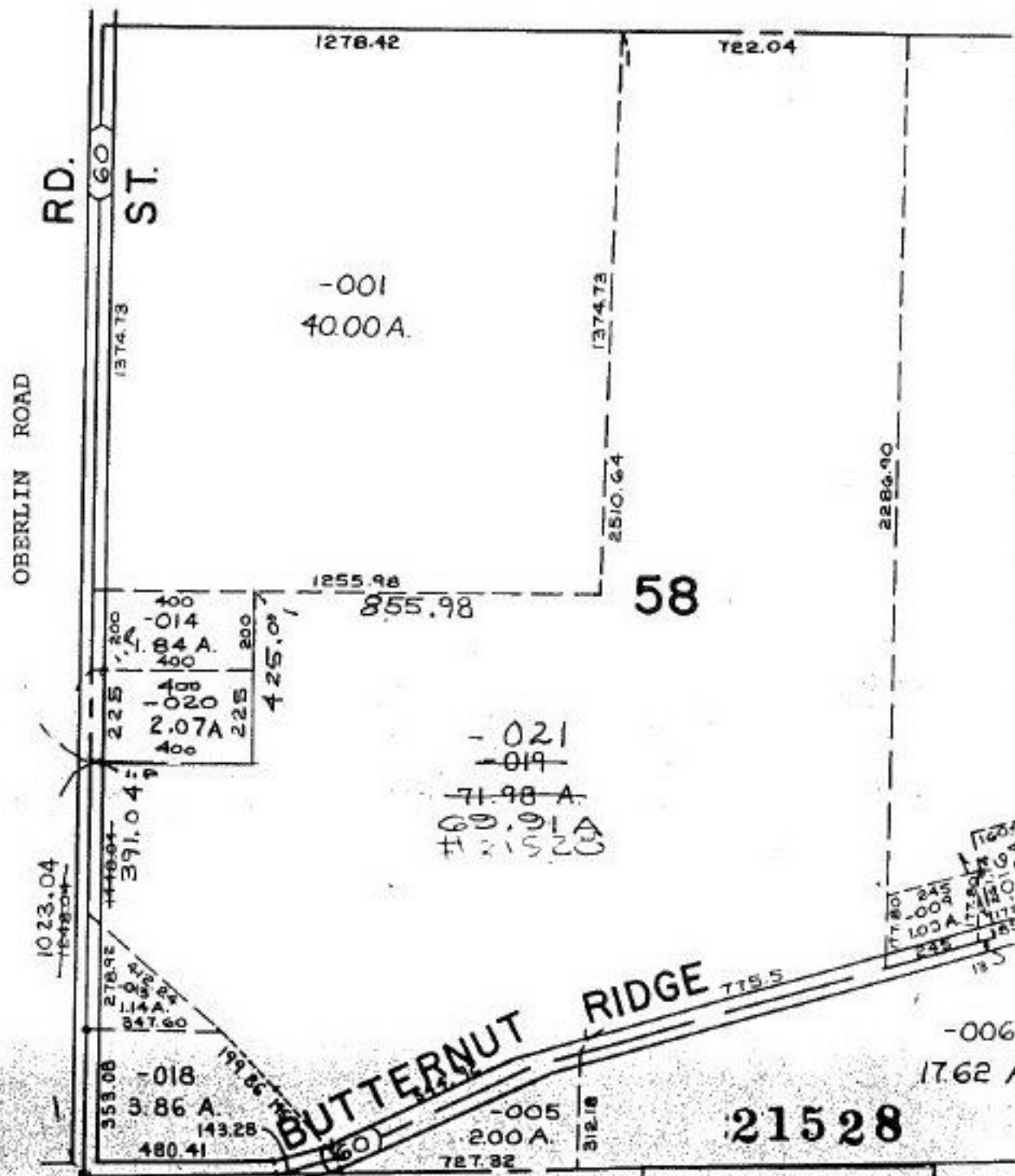


21528

TE



APPROVED  
LORAIN CO.  
MAP DEPT

DATE 10-19-95

PAGE 9-H

BY CAROLYN  
FRANCIS

#21528

P.P.NO. 09-00-058-000-  
PRIOR INST: BY 1192/209  
CLOSURE: 1:INF.  
SURVEYED BY: JOHN POZYWAK  
REG. SURVEYOR

-001  
72.95 A.