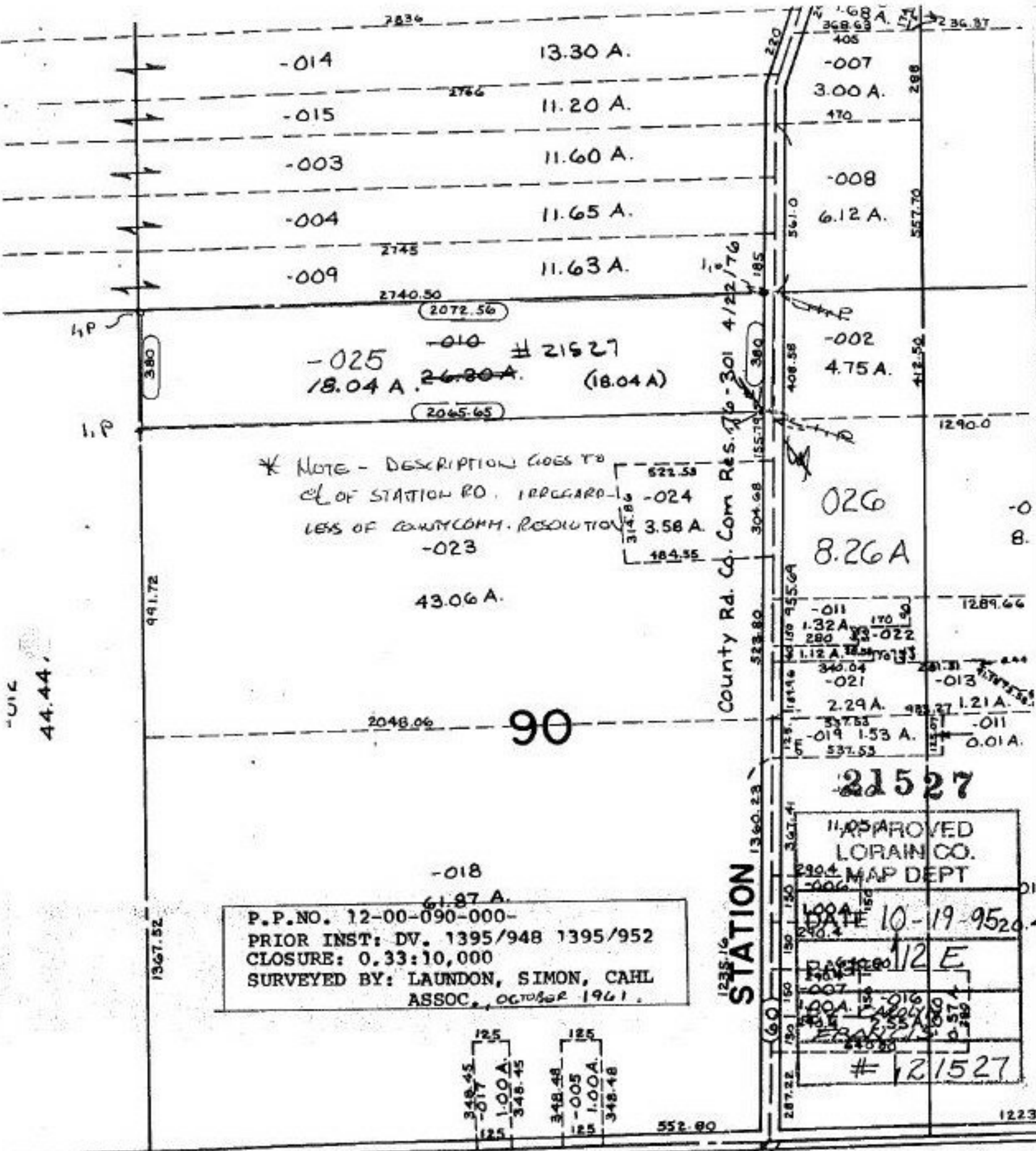


21527



* NOTE - DESCRIPTION GOES TO
 CL OF STATION RD. REGARDLESS
 LESS OF COUNTY COMM. RESOLUTION

P.P. NO. 12-00-090-000-
 PRIOR INST: DV. 1395/948 1395/952
 CLOSURE: 0.33:10,000
 SURVEYED BY: LAUNDON, SIMON, CAHL
 ASSOC., OCTOBER 1961.

APPROVED
 LORAIN CO.
 MAP DEPT
 DATE 10-19-95
 # 21527

44.44

CROCKREIZ RD

MEDINA COUNTY

SCALE: 1" = 400'

COLUM

, 86 THRU 95