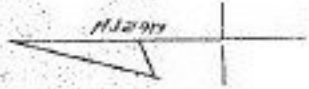
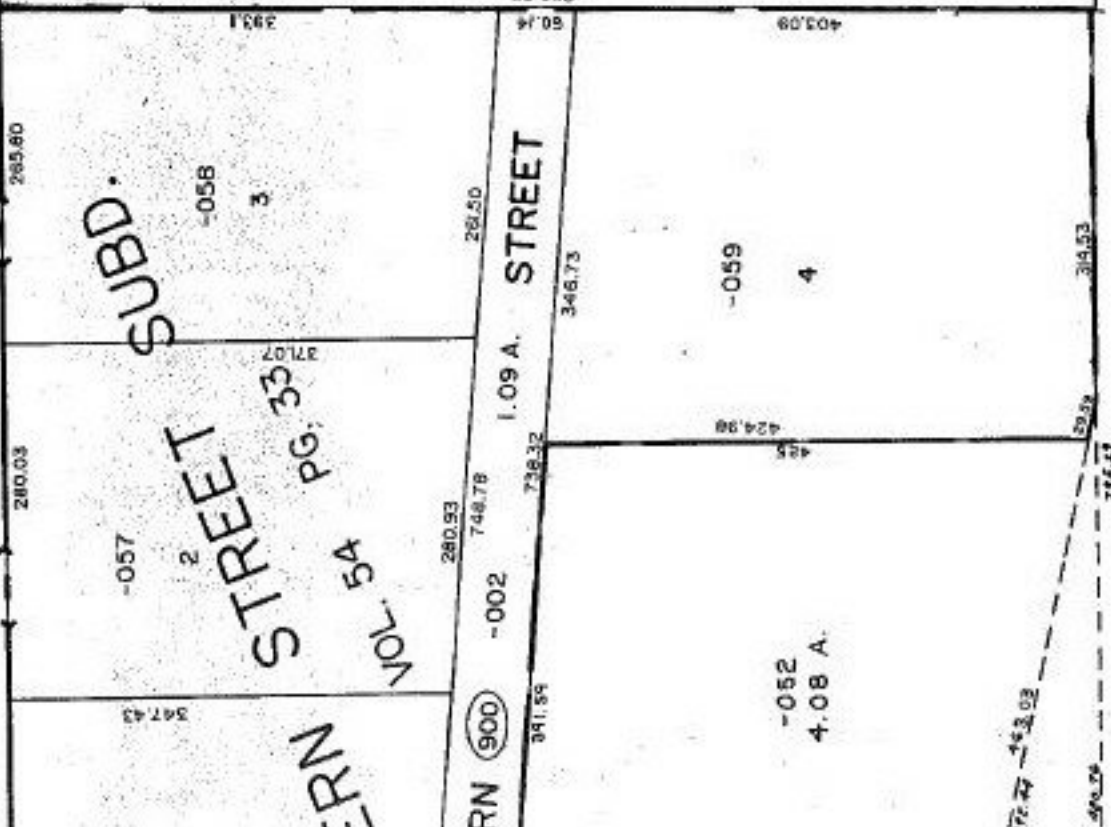


SEE 9-00-067-B



AS SURVEYED BY: KS ASSOCIATES
 CLOSURE: 0.01:10,000
 PRIOR INSTRUMENT: D.V. 1389 P. 3

#21511
 APPROVED
 LORAIN CO.
 MAP DEPT.
 DATE 9-15-95
 PAGE 9-00-077-B
 BY T. HOLLIS
 Sub. 21511

-062
~~7-23-A~~
 5.14 A.
 ACREAGE CORRECTION
 PER SURVEY BY: KS ASSOC.

