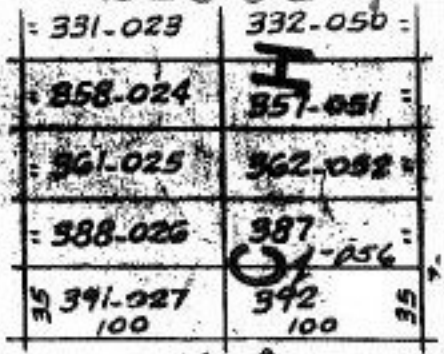
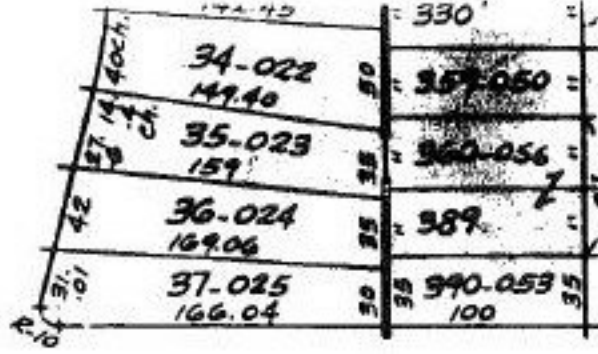
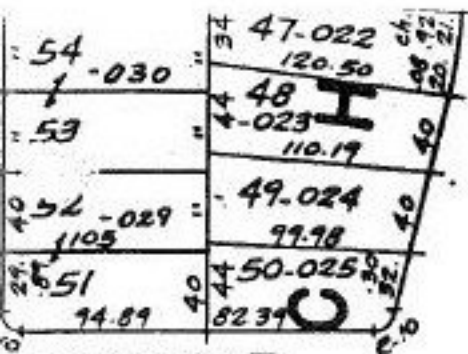
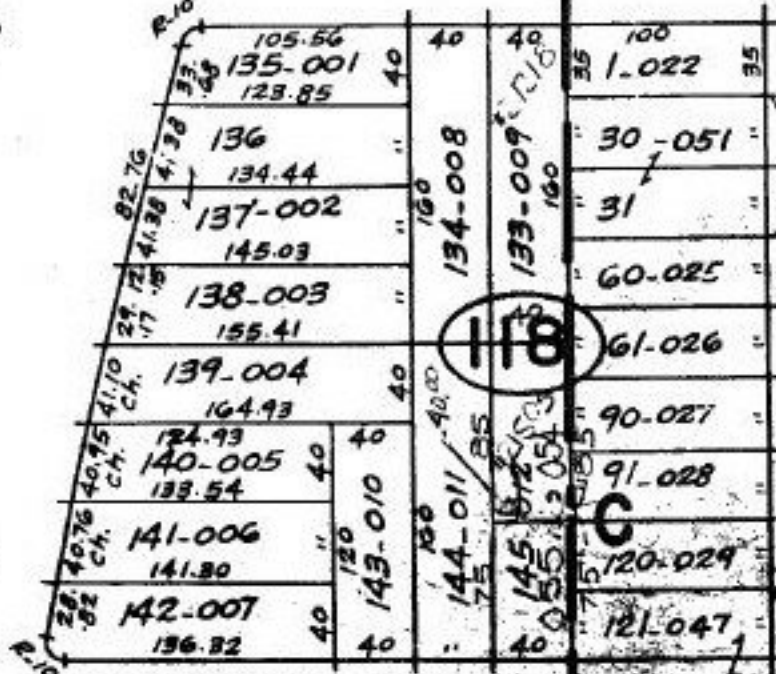
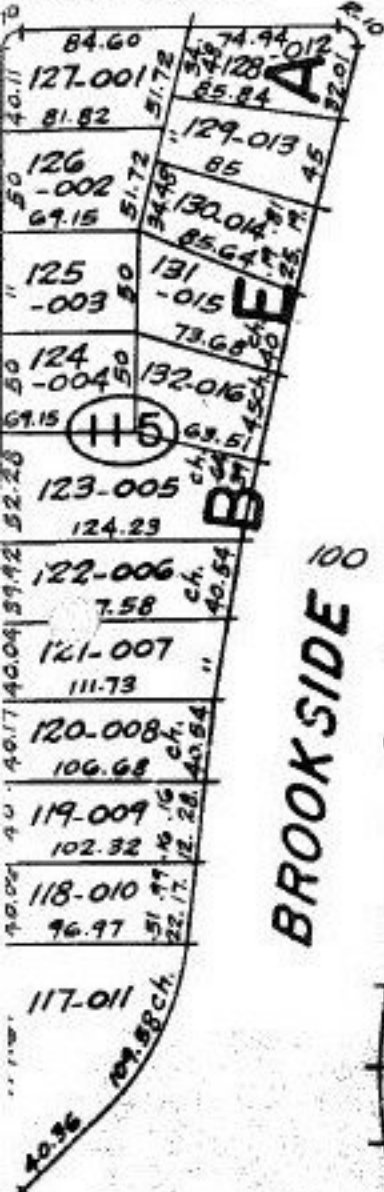


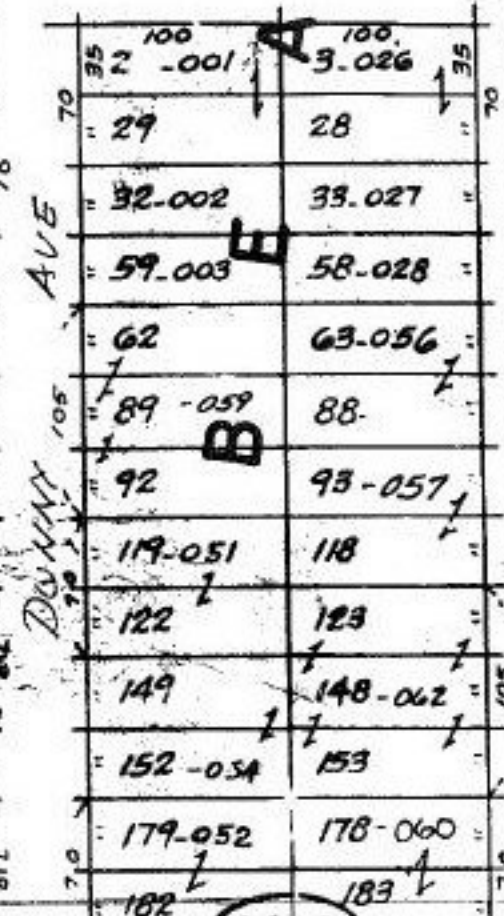
21503



IVANHOE

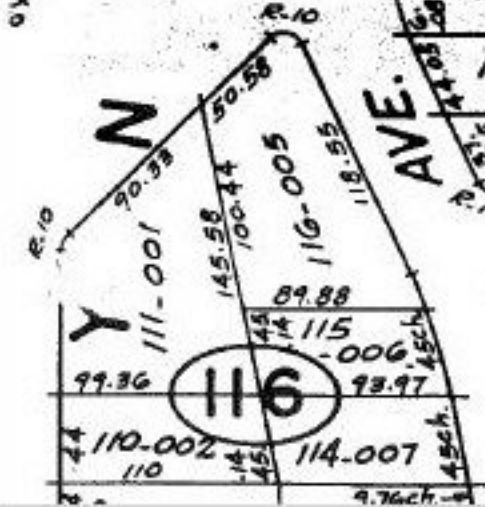


MONROE CT.

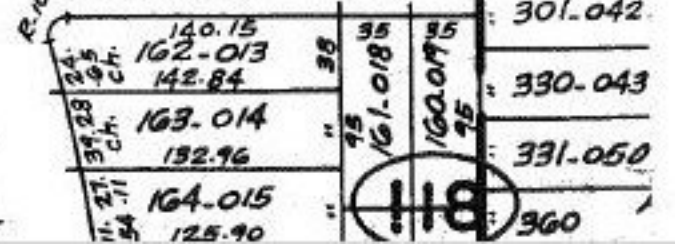


DUNN AVE.

BROOKSIDE 100



PAGE 40 CT.



P.P. NO. 03-00-040
PRIOR INST: DV. 1062/544
CLOSURE: INF.
SURVEYED BY: PATRICK A. MCGANNON REG. SURVEYOR

21508

APPROVED
LORAIN CO.
MAP DEPT

DATE 9-27-95

PAGE 3-00-040

BY CAROLYN FRANCIS

#21503