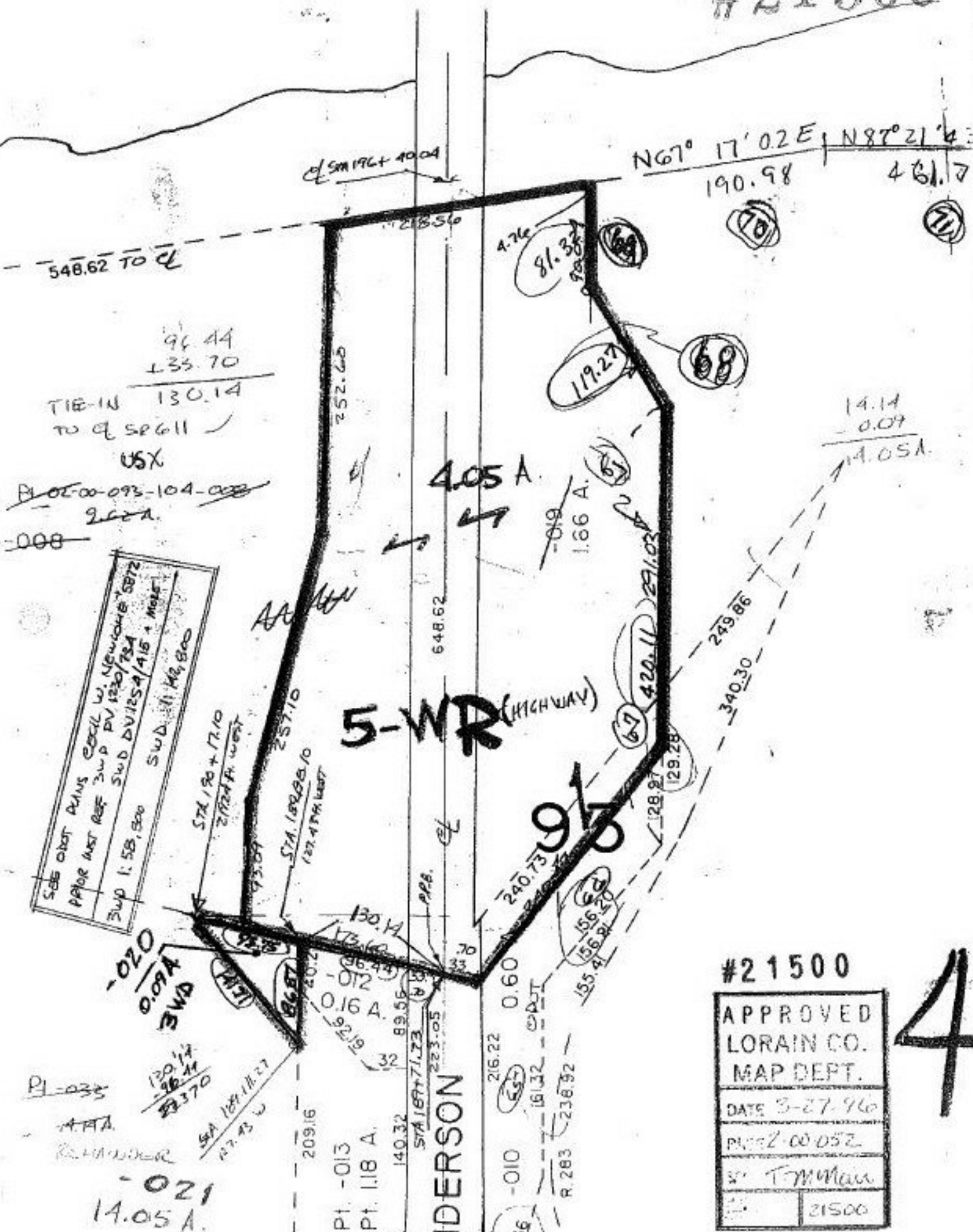


#21500



548.62 TO CL
 96.44
 + 33.70

 TIE-IN 130.14
 TO CL SP611 ✓
 USX

~~02-00-093-104-033~~
 262A.
 -008

SAB DIST PLANS CORRECTION W. NEWCOMB SBTZ
 PAPER INST REF SWP PV 1230/784
 SWP 1.58, 800 SWD DV1254/415 - MOIST
 SWD 11, 149, 800

-020
 0.09A
 3WA
 120.14
 - 36.44

 83.70
 104.11, 27
 27.43 W
 -021
 14.05 A.

252.605
 4.76
 81.32
 19.27
 4.05 A.
 1.66 A.
 648.62
 5-WR (HIGHWAY)
 96
 420.11
 271.03
 249.86
 340.30
 29.28
 128.27
 129.28
 240.73
 130.14
 173.62
 36.44
 -012
 0.16 A.
 89.55
 61.26
 32
 209.16
 140.32
 PT. -013
 PT. 1.18 A.
 STA 187+7.23
 223.05
 PRR.
 216.22
 0.60
 161.32
 0.04
 R. 283
 216.32
 36
 155.41
 156.62
 156.20

#21500

APPROVED
 LORAIN CO.
 MAP DEPT.
 DATE 3-27-96
 PROJ 2-00-052
 BY T. M. Mann
 21500

4