

#21500

COOT PLATS Cecil W. NEWCOMB P.S.
CL. 1: 58,800 DU 1230/734
PRIOR INST. REF. OF 10/1927

~~501~~

Pt. 02-00-093-104-021
Pt. 14.05 A.
Pt. 02-00-093-501-033
Pt. 14.14 R.

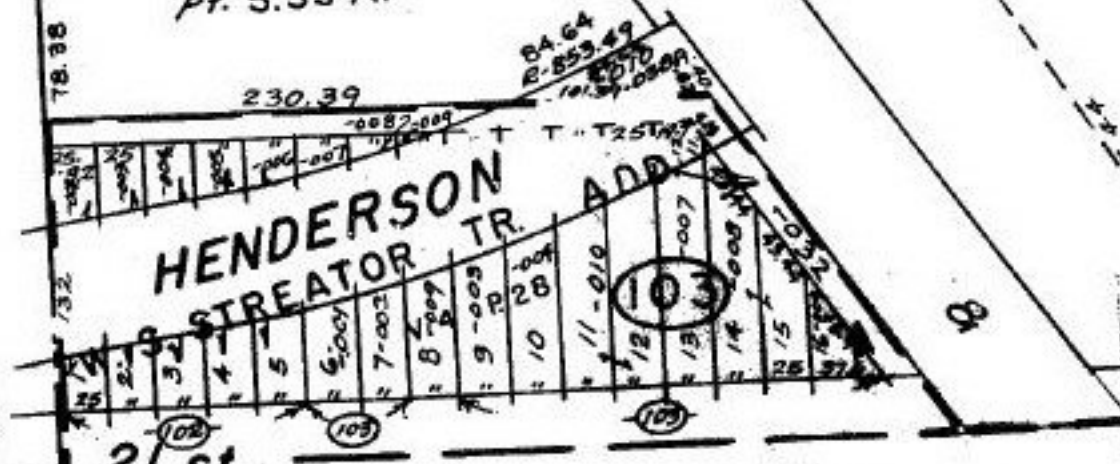
A = 1257.12
CH = 1154.40
R = 896.49
279.60

02-00-093-103-011
1.60 R.
400.25

102

Pt. 02-01-003-159
-027
Pt. 5.55 A.

HENDERSON
STREATOR TR. ADD.



21st



105

AVE.

#21500

APPROVED
LORAIN CO.
MAP DEPT.
DATE 3-27-96
PAGE 2-00-093-B
T. McMan
21500

Old Mill P.O.

DR.

RD.

ESS

400

EE

2