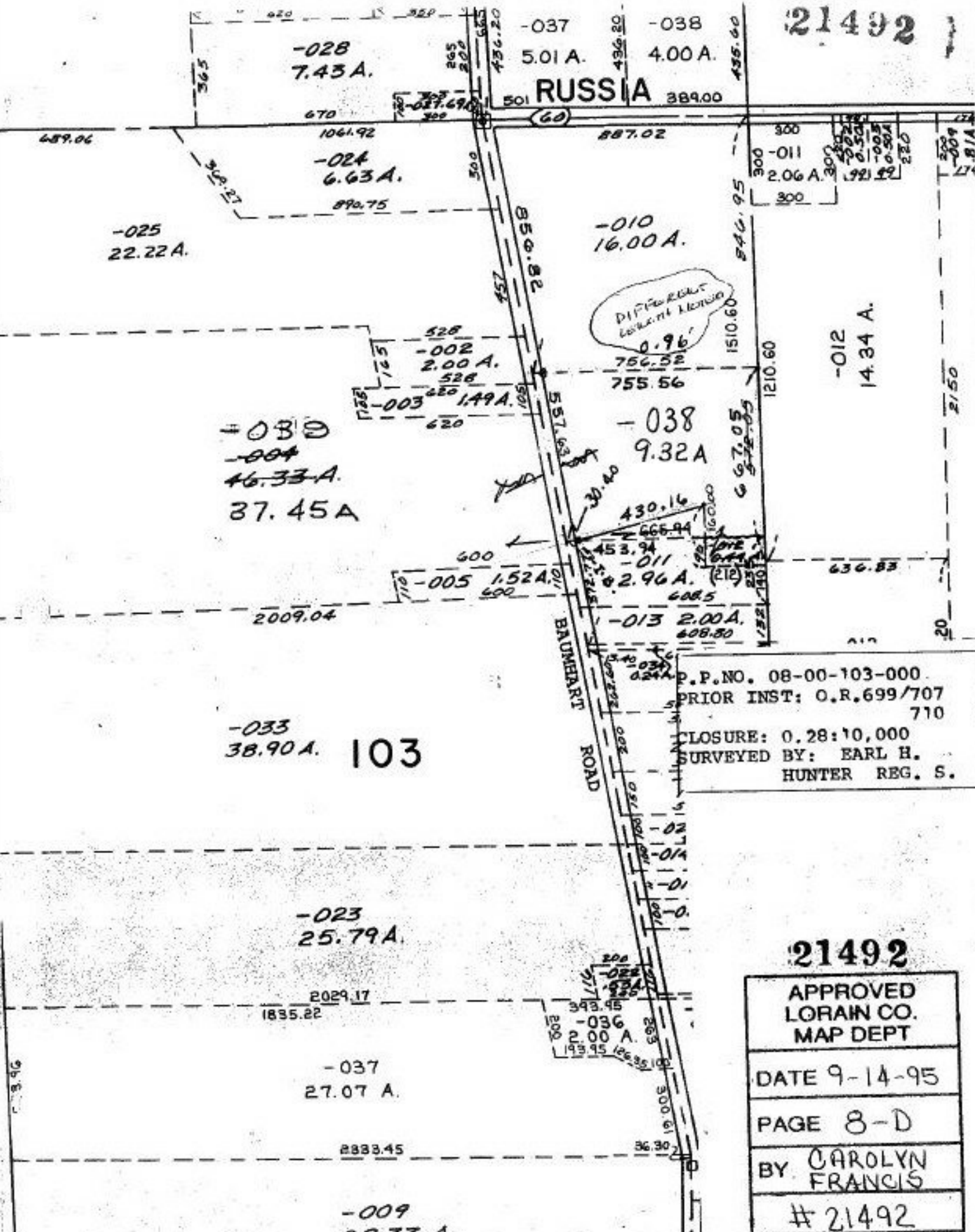


21492

RUSSIA



DIFFERENT LOT LINE

P.P.NO. 08-00-103-000
 PRIOR INST: O.R.699/707
 710
 CLOSURE: 0.28:10,000
 SURVEYED BY: EARL H.
 HUNTER REG. S.

21492

APPROVED
 LORAIN CO.
 MAP DEPT
 DATE 9-14-95
 PAGE 8-D
 BY CAROLYN
 FRANCIS
 # 21492