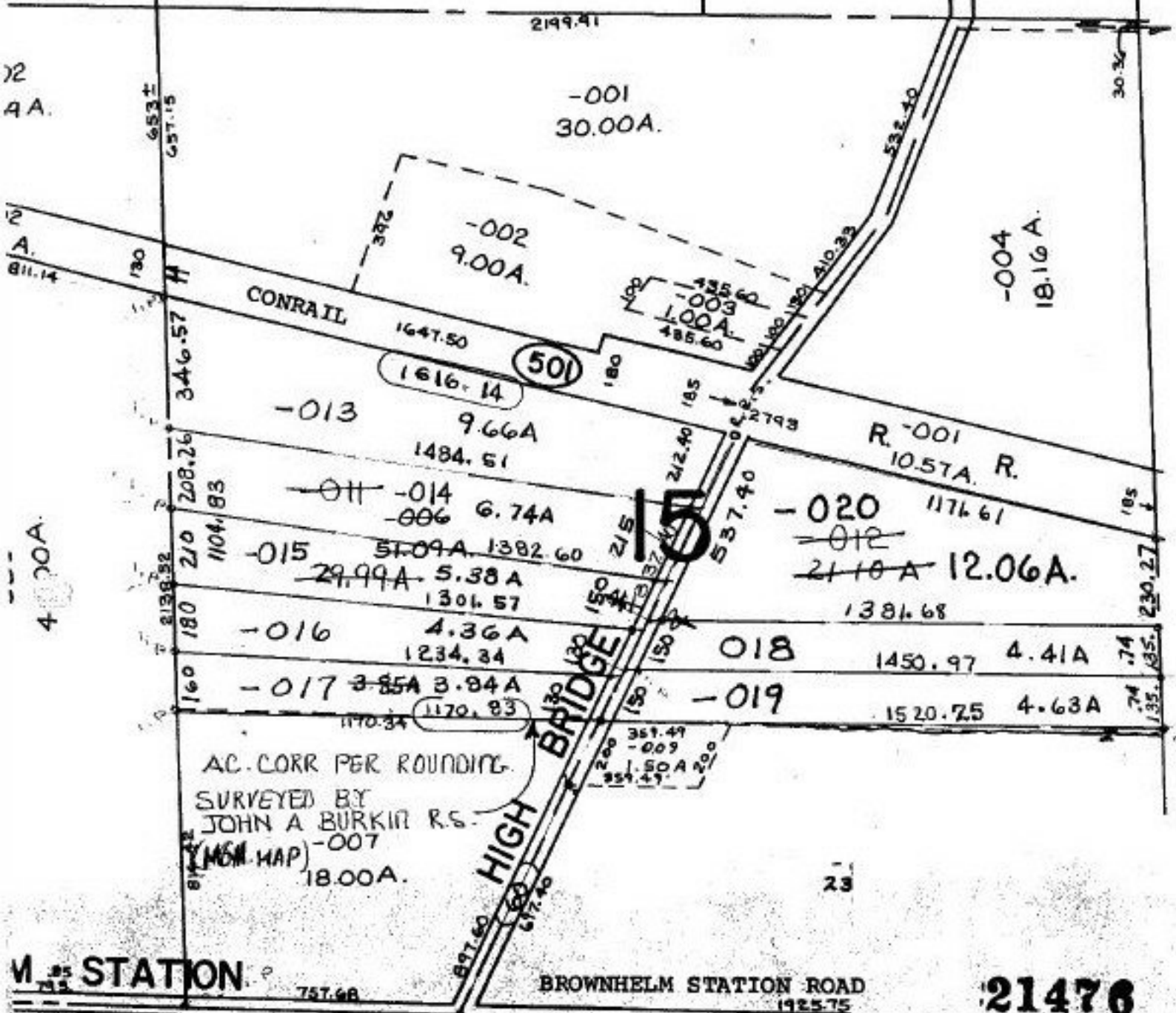


SEE

21476

SL



AC. CORR PER ROUNDING.  
 SURVEYED BY  
 JOHN A. BURKIN R.S.  
 (MCM MAP) -007  
 18.00A.

STATION

BROWNHELM STATION ROAD

I-E

P.P. NO. 01-00-015-000  
 PRIOR INST: (006)  
 CLOSURE: 29.99ac. 0.03:10,000  
 9.66ac. 0.06:10,000 0.01:10,000 (6.74ac)  
 0.01:10,000 (5.38ac) 4.36ac. 0.05:10,000  
 3.84ac. 0.03:10,000 4.41ac. -  
 4.63ac. ---  
 SURVEYED BY: JOHN A. BURKIN REG. SURVEYOR

21476

APPROVED  
 LORAIN CO.  
 MAP DEPT

DATE 9-11-95

PAGE 1-A

BY CAROLYN  
 FRANCIS

#21476