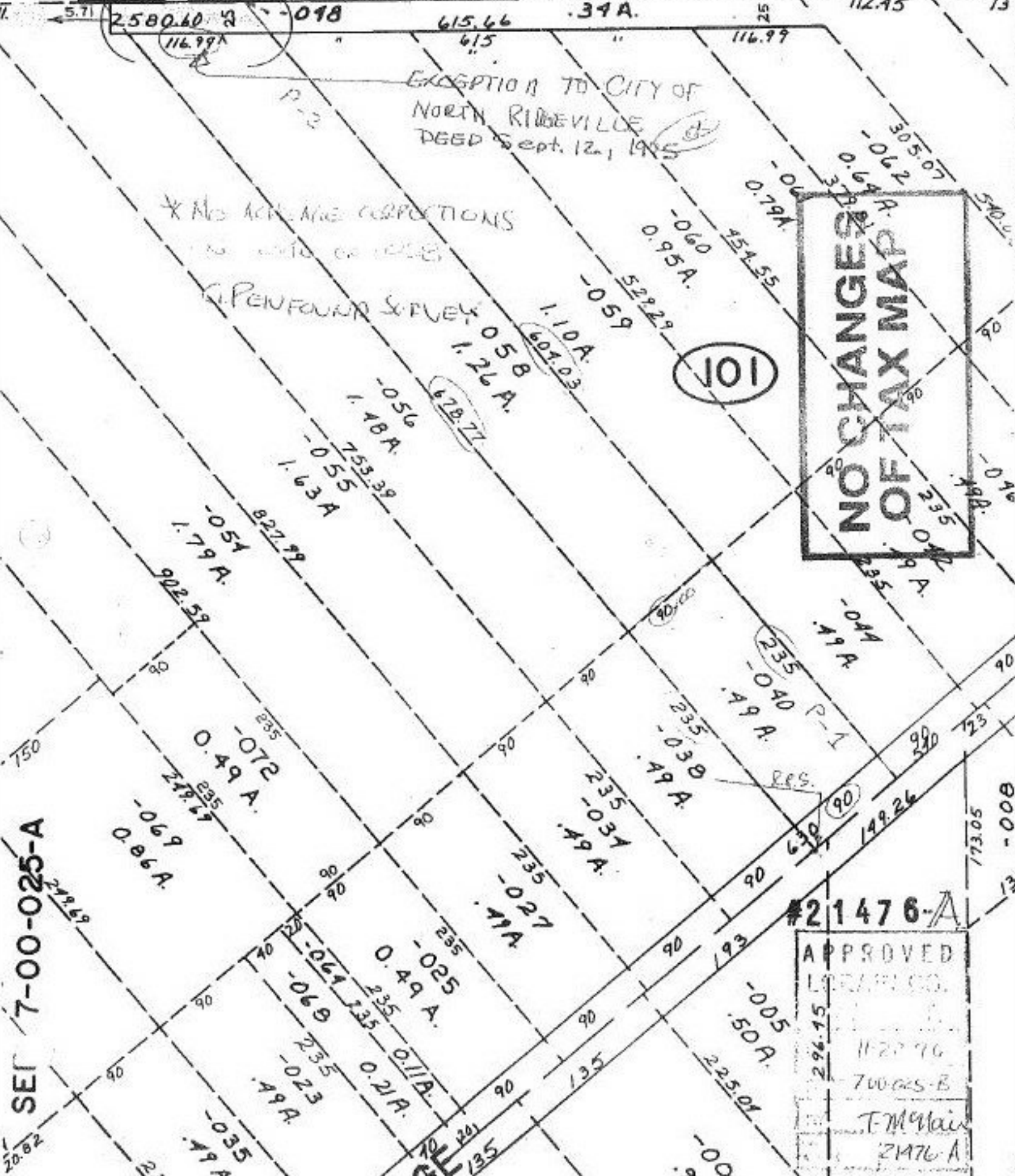
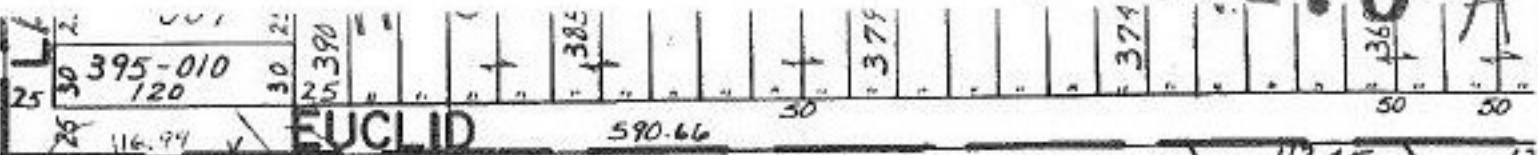


#21476-A



EXCEPTION TO CITY OF
NORTH RIDGEVILLE
DGED Sept. 12, 1955

* NO ACFT. MEAS. CORRECTIONS
NO. 1010 OF 1958

G. PENFOUND SURVEY

**NO CHANGES
OF TAX MAP**

101

SE 7-00-025-A

#21476-A

APPROVED
L. M. HAIN
11-27-76
700-025-B
T. M. Hain
21476-A