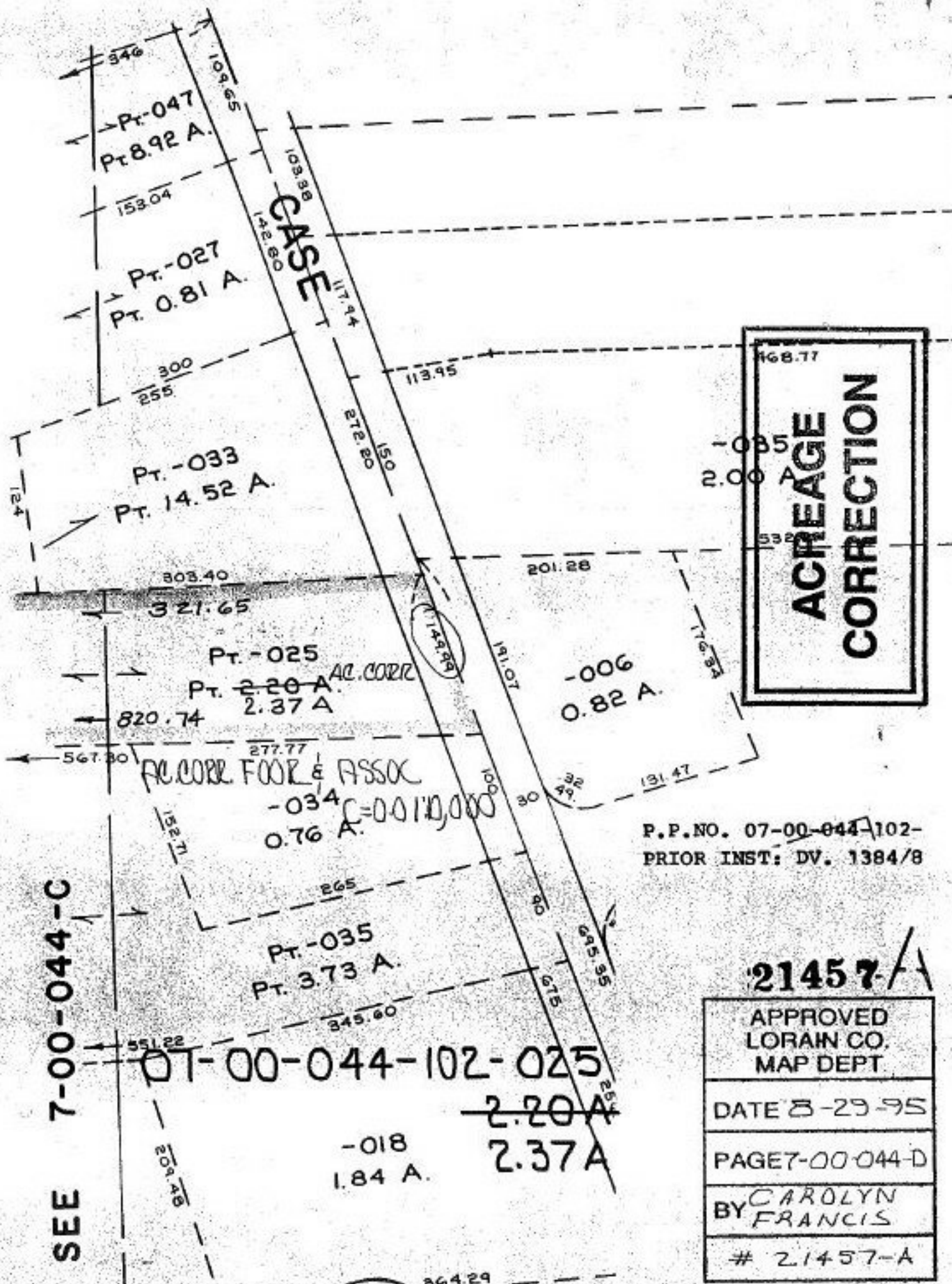


21457A



168.77  
 -005  
 2.00 A.  
 532  
**ACREAGE  
 CORRECTION**

P.P. NO. 07-00-044-102-  
 PRIOR INST: DV. 1384/8

21457A

APPROVED  
 LORAIN CO.  
 MAP DEPT

---

DATE 8-29-95

---

PAGE 7-00-044-D

---

BY CAROLYN  
 FRANCIS

---

# 21457-A

SEE 7-00-044-C

PT-00-044-102-025  
~~2.20 A~~  
 2.37 A

-018  
 1.84 A.

102 864.29