

PT. -063  
PT. 71.77 A.

#21451-D

-004  
16.14 A.

1306.80

449.64

PT.-069  
PT. 14.72 A.

571.56  
576.42

517.39

114.01

3502.46  
4262.28

851.86

971.86

3.46 A.

848.09

2346.1

2

P.P. No.'s to be  
TRANSFERRED

04-00-002-

- (102) - 069 14.72 A.
- 022 4.68 A.
- 018 1.82 A.
- 017 6.07 A.

SEE 4-00-002-G

SEE 4-00-002-H

MOON

RD.  
(66)

MULTIPLE PARCELS w/  
EXCEPTION WHICH  
IS THE ONLY SURVEYED  
PARCEL.

NO MAP CHANGES ARE  
NECESSARY AT THIS  
TIME

#21451-D

APPROVED  
LORAIN CO.  
MAP DEPT.

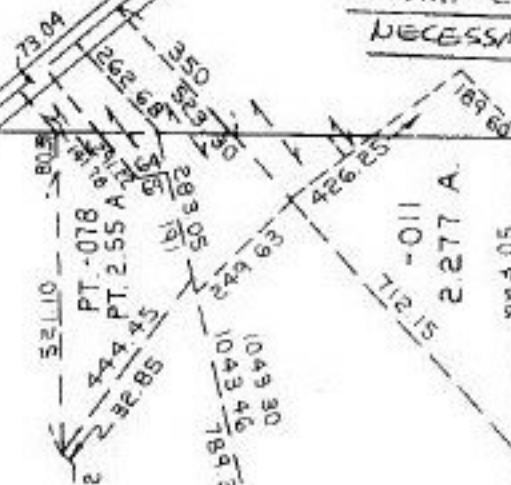
DATE 2-23-96

PAGE 4-1

T. McMain

21451-D

878.40  
CONT FROM 21451-D  
C. G. FRANKS



SEE 4-00-002-F