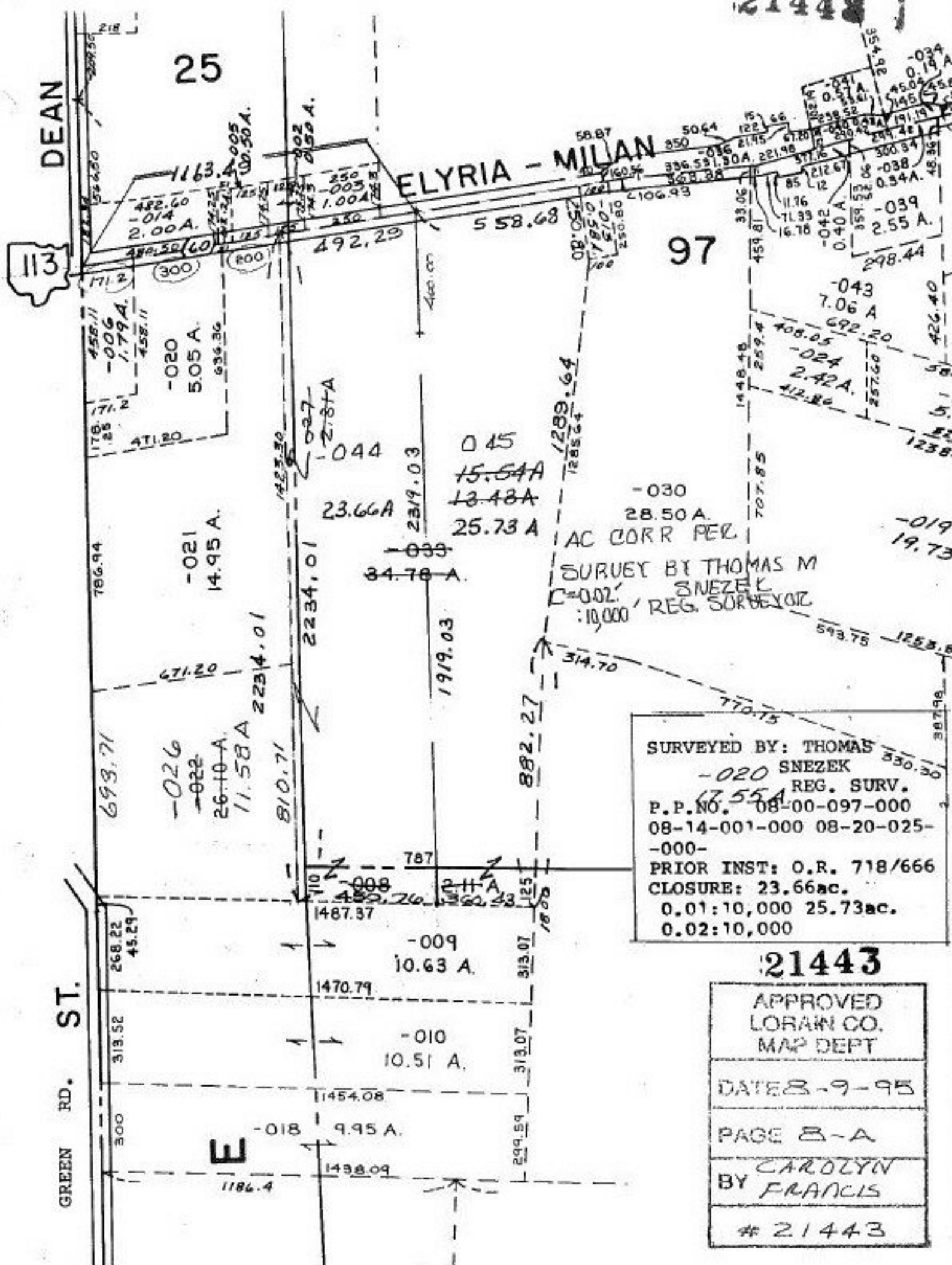


21443



SURVEYED BY: THOMAS M SNEZEK  
 -020 REG. SURV.  
 P.P. NO. 08-00-097-000  
 08-14-001-000 08-20-025-000-  
 PRIOR INST: O.R. 718/666  
 CLOSURE: 23.66ac.  
 0.01: 10,000 25.73ac.  
 0.02: 10,000

21443

APPROVED  
 LORAIN CO.  
 MAP DEPT  
 DATE 8-9-95  
 PAGE 8-A  
 BY CAROLYN FRANCIS  
 # 21443