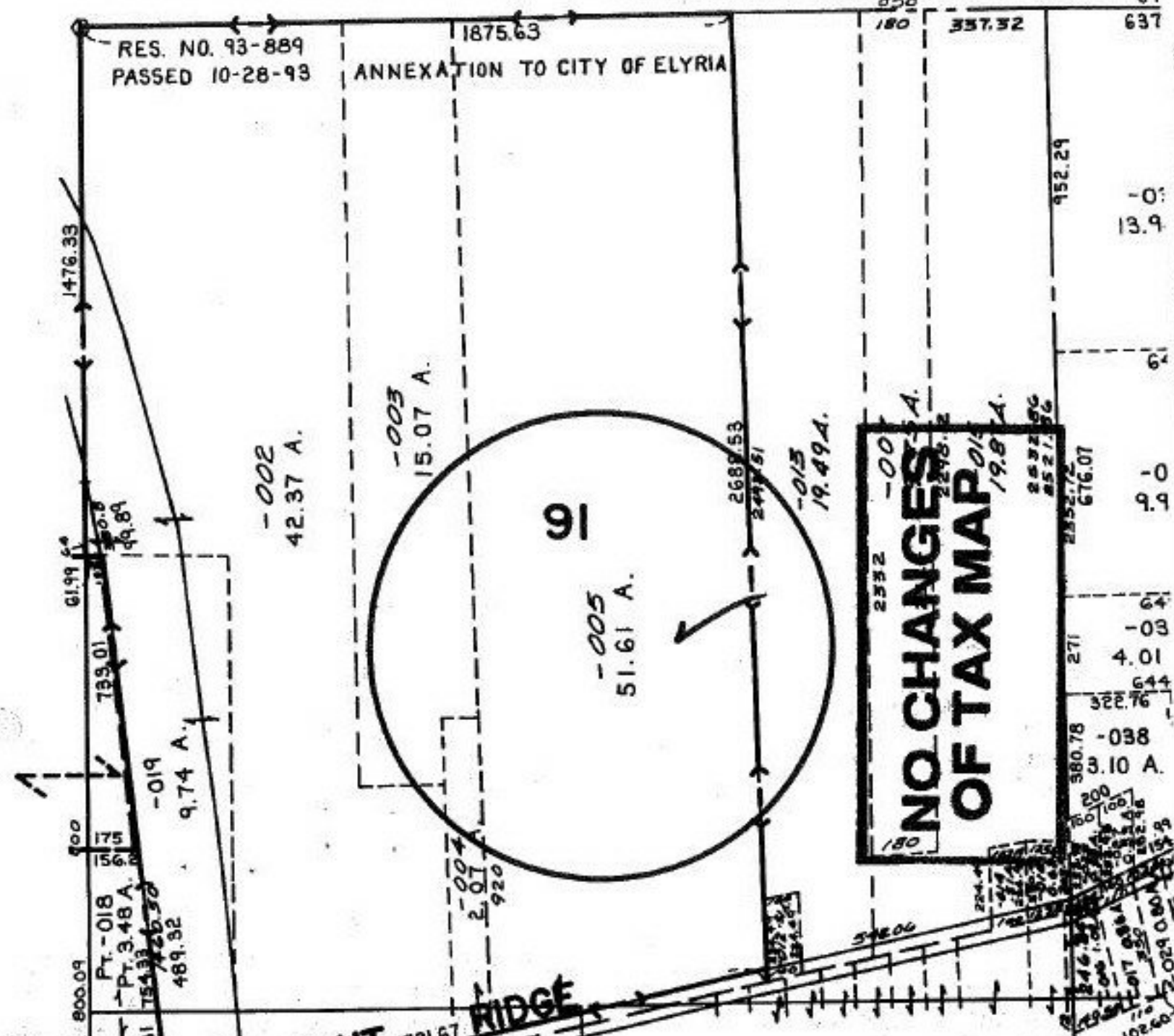


21424 A

858 180 357.52 637

RES. NO. 93-889
PASSED 10-28-93

ANNEXATION TO CITY OF ELYRIA



2332 -00
**NO CHANGES
 OF TAX MAP**
 2298.2
 19.8 A.
 2521.72
 676.07

CHESTNUT RIDGE

21424 A

AC. CORR. TO DUP ONLY
TAX MAP & REG O.K.

APPROVED LORAIN CO. MAP DEPT
DATE 7-21-95
PAGE 11-A
BY CAROLYN FRANCK
#21424-A

BY PASS

CORRECTING TRANSFER
CORRECTION SHEET #2088RX
DATED 8-31-94

WRONG AC. WAS PUT
ON CORR. SHT.

RD.

GO

0-092

00-092