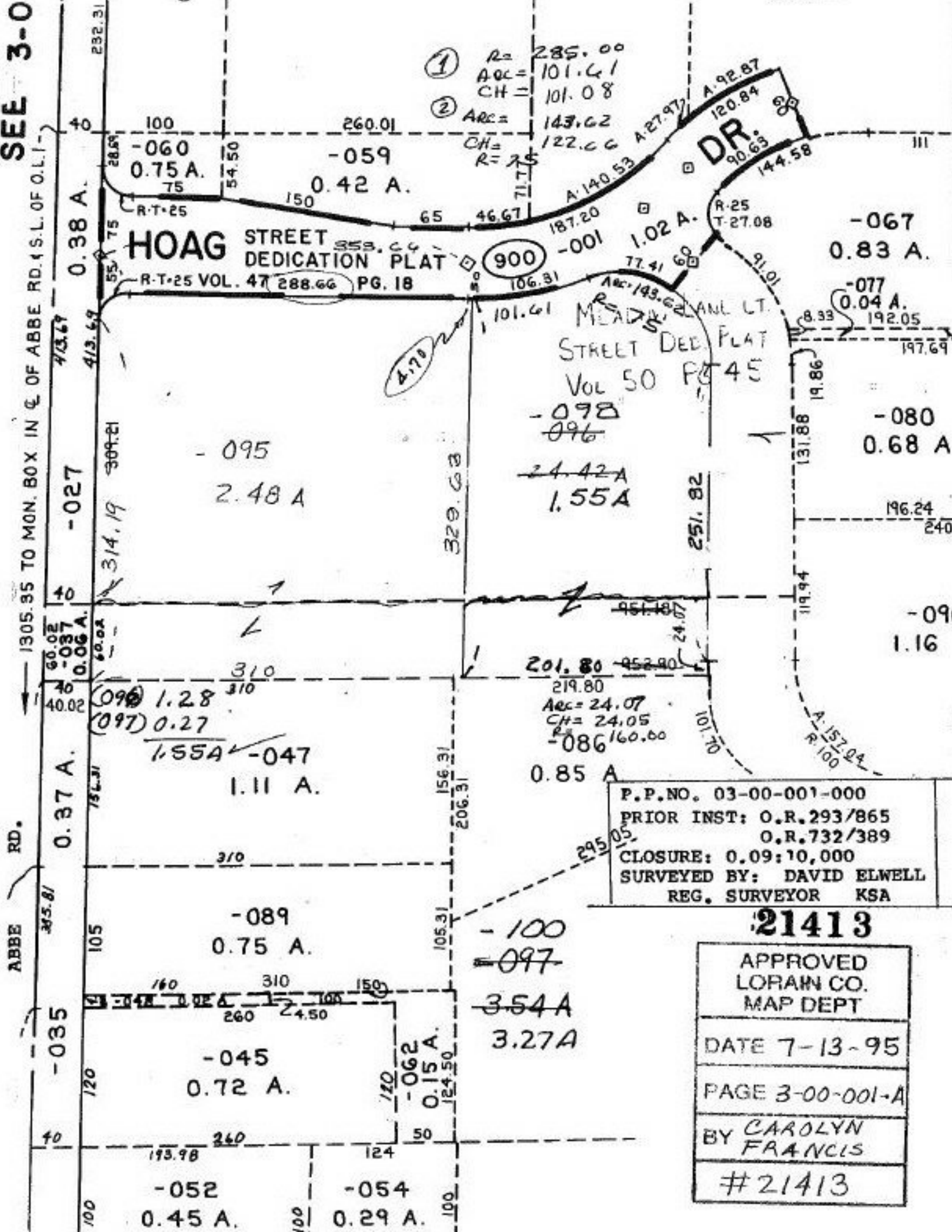


SEE 3-0

21413



P.P.NO. 03-00-001-000
 PRIOR INST: O.R. 293/865
 O.R. 732/389
 CLOSURE: 0.09:10,000
 SURVEYED BY: DAVID ELWELL
 REG. SURVEYOR KSA

21413

APPROVED
 LORAIN CO.
 MAP DEPT

DATE 7-13-95

PAGE 3-00-001-A

BY CAROLYN
 FRANCIS

#21413