

21408

~~038~~ - 065  
17.93A 14.29A

- 064  
3.64A

344.61

504.60

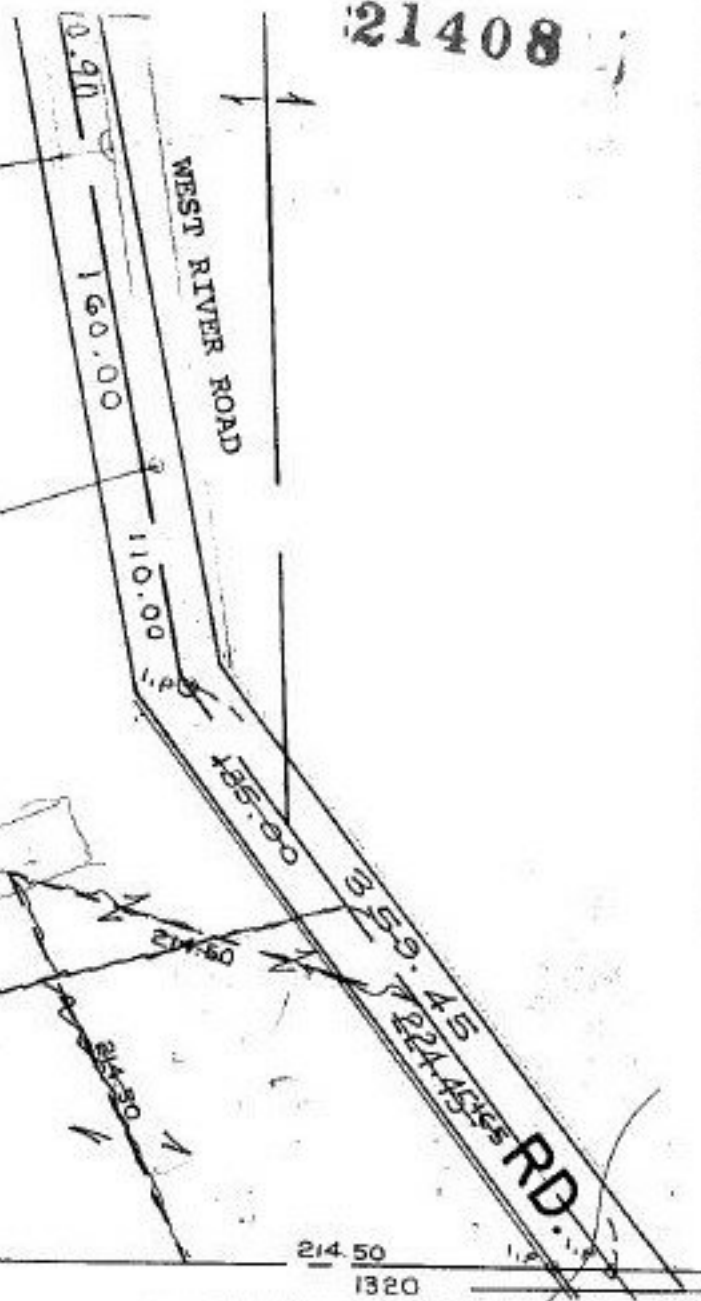
231.76

227.25

390.88

OL 32

OL 33



P.P.NO. 01-00-032-000-  
 PRIOR INST: DV. 1346/876  
 CLOSURE: 0.11:10,000  
 SURVEYED BY: N.R. HURA  
 REG. SURVEYOR (M.G.H)

21408

APPROVED  
LORAIN CO.  
MAP DEPT

DATE 8-28-95

PAGE 1-00-032-A

BY CAROLYN  
FRANCIS

# 21408

WILHELM TWP.

00'