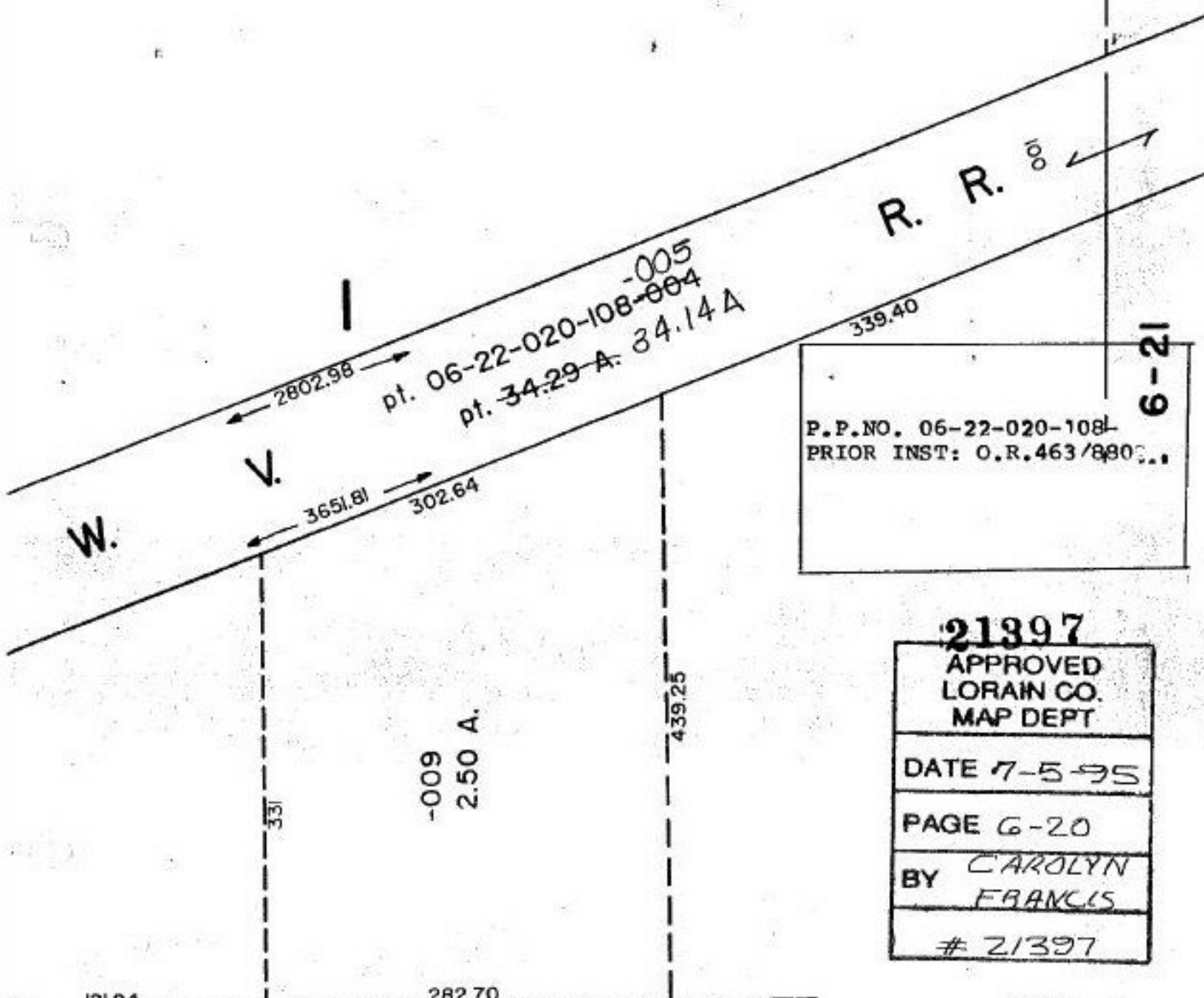


OL. 1

21397
6-20 21397



R. R. ←

W.

2802.98

pt. 06-22-020-108-005
pt. 34.29-A: 34.14A

3651.81

302.64

339.40

331

-009
2.50 A.

439.25

191.94

282.70

6-21

P.P.NO. 06-22-020-108
PRIOR INST: O.R.463/880...

21397
 APPROVED
 LORAIN CO.
 MAP DEPT

DATE 7-5-95

PAGE 6-20

BY CAROLYN
 FRANCIS

21397