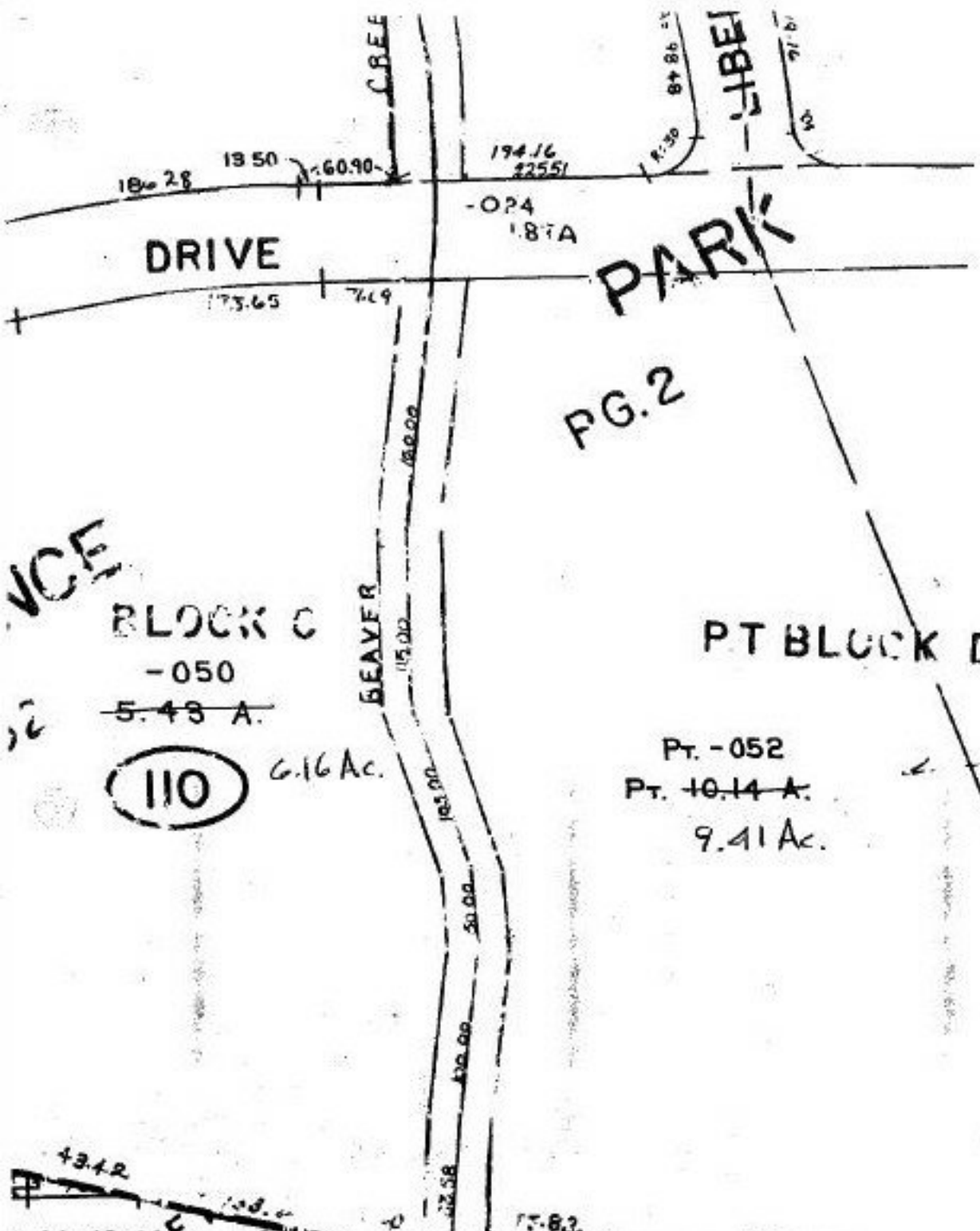


21381-X



VICE

110

104

2 ACRESAGE CORRECTIONS

SEE CERT. OF CORRECTION

21381-X

APPROVED	
L. GRAM CO.	
TAX DEPT.	
DATE 6-20-95	
PAGE 5-00-01-A	
BY T. M. Hain	
VOID AFTER	21381-X



ESTATE 104