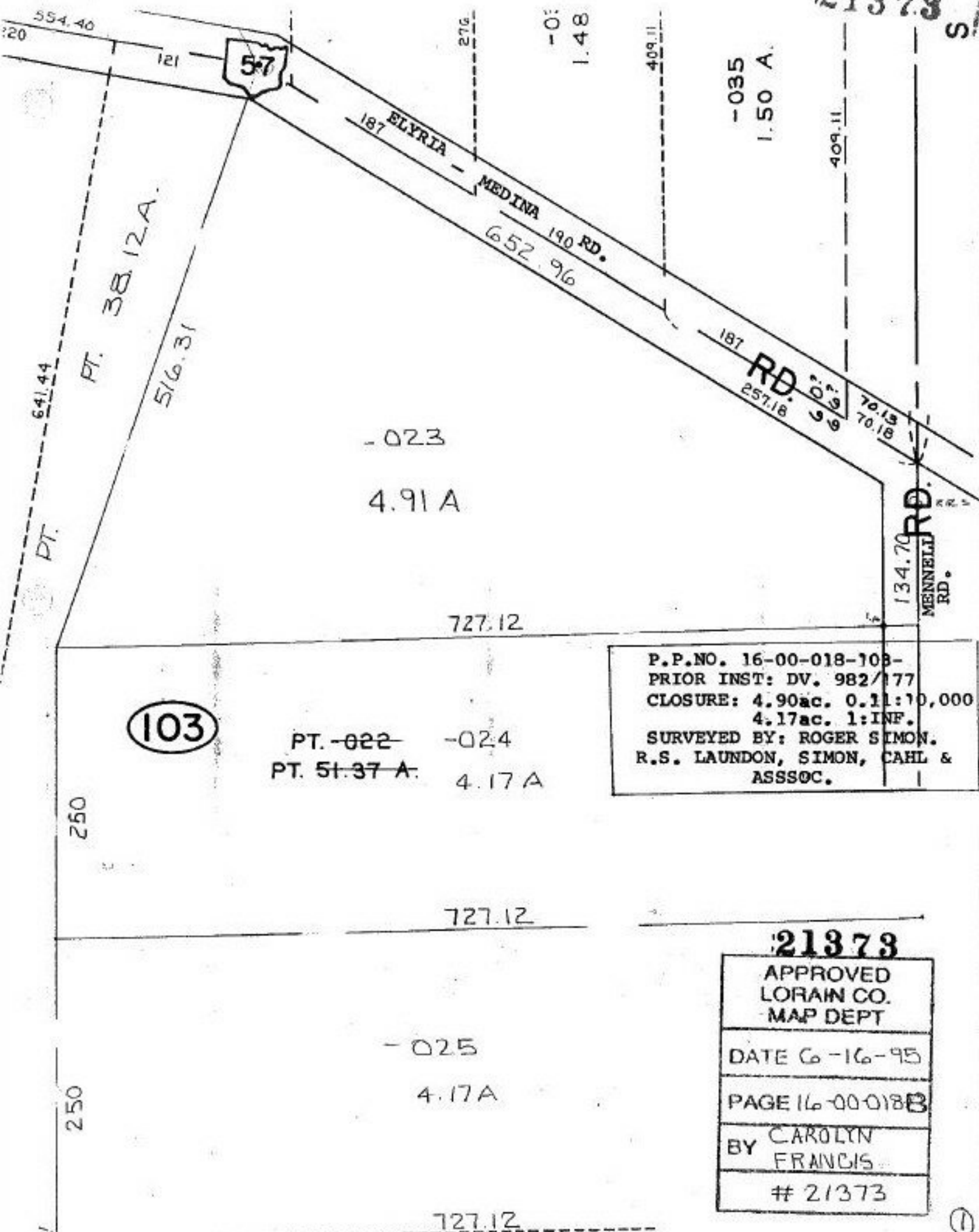


21373 S



P.P.NO. 16-00-018-108-  
 PRIOR INST: DV. 982/177  
 CLOSURE: 4.90ac. 0.11:10,000  
 4.17ac. 1:INF.  
 SURVEYED BY: ROGER SIMON.  
 R.S. LAUNDON, SIMON, CAHL &  
 ASSOC.

21373

APPROVED  
 LORAIN CO.  
 MAP DEPT  
 DATE 6-16-95  
 PAGE 16-00-018B  
 BY CAROLYN  
 FRANCIS  
 # 21373

1