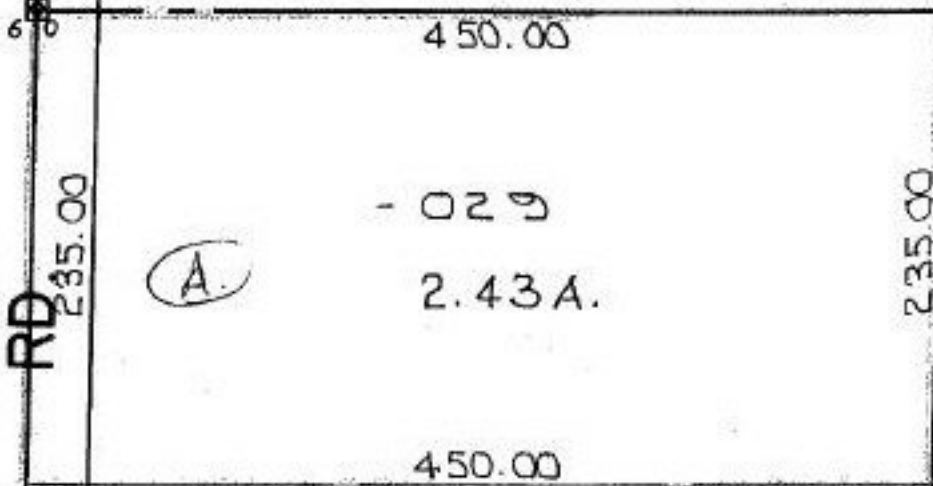


21365

SEE

MENNELL RD.

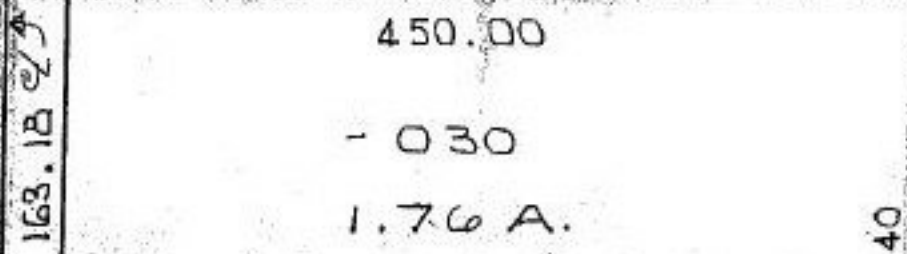


-035
~~-028~~
 107.67 A.
 102.37 A.

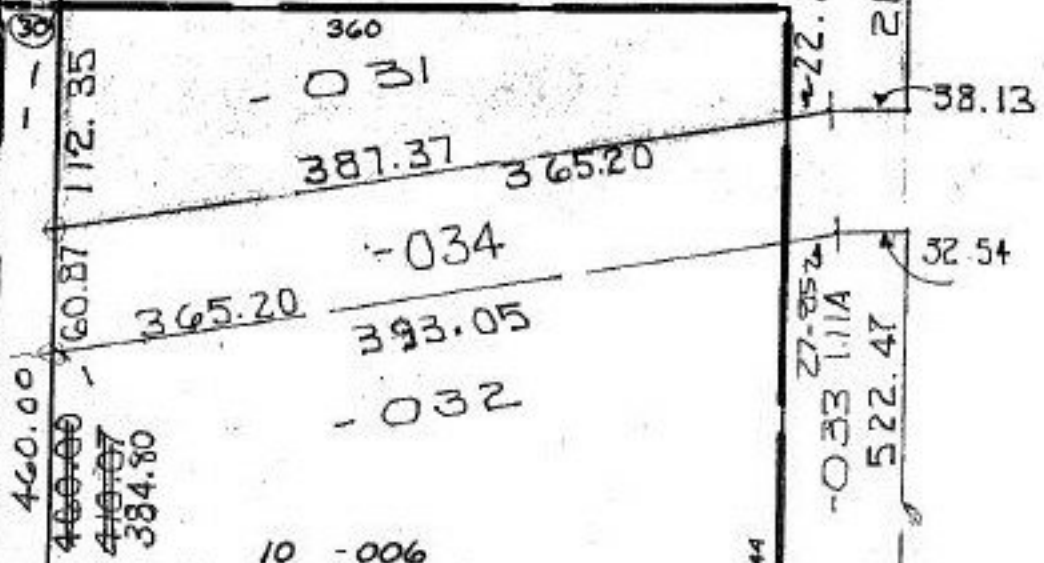
P.P.NO. 16-00-064-000
 PRIOR INST: (028)
 (022) (006)
 CLOSURE: 2.43ac. 1:INF.
 2.46ac. 0.08:30,000
 4.76ac. 0.02:30,000
 2.81ac 1:INF.
 SURVEYED BY: CUNNINGHAM,
 THOMAS A. ~~FRANCIS~~
 PS # 527

266.82

ppb



MENNELL



21365

APPROVED
 LORAIN CO.
 MAP DEPT

DATE 6-22-95

PAGE 16-00-064-A

BY CAROLYN
 FRANCIS

21365

10 - 006

44

16-00-064-A